

Great North Road Solar and Biodiversity Park

Phase Two Consultation Materials - Part 1 of 2

Document reference - EN010162/APP/5.1.6

Revision number 1

June 2025

Infrastructure Planning (Applications: Prescribed Forms and Procedure) Regulations 2009, APFP Regulation 5(2)(q)

Contents

| | |
|-----------|---|
| 1 | Phase Two Central Booklet |
| 2 | Phase Two Feedback Form |
| 3 | Phase Two Exhibition Materials..... |
| 4 | Phase Two Community Consultation Postcard |
| 5 | Phase Two Poster |
| 6 | Phase Two Newspaper Adverts (placed in Newark Advertiser and Nottingham Post)..... |
| 7 | Phase Two Site Location Plan |
| 8 | Phase Two Masterplan Overview..... |
| 9 | Phase Two Materplan (Sites 1 to 9) |
| 10 | Phase Two Access Proposals |
| 11 | Phase Two Community Webinar Slides..... |

1 PHASE TWO CENTRAL BOOKLET



January 2025

Great North Road Solar and Biodiversity Park

Phase Two Consultation
Central Booklet

Introduction

Elements Green is developing proposals for a new solar and energy storage park located to the northwest of Newark-on-Trent, Nottinghamshire.

The project, named Great North Road Solar and Biodiversity Park, has a potential generation capacity of around 800 megawatts (MW) AC of solar energy. This is enough clean, affordable energy to meet the power needs of approximately 400,000 homes and businesses.

The project boundary comprises approximately 2,900 hectares of agricultural land located to the northwest of Newark. The solar PV area of the development is currently 1,372 hectares with the remaining area designated for enhancement, cables and access.

This central booklet outlines who we are, our updated proposals for the Great North Road Solar and Biodiversity Park, and how you can get involved in our Phase Two Statutory Consultation.

Our Phase Two Consultation starts on Thursday 09 January 2024, and will run for six weeks, closing on Thursday 20 February 2025.

This is a statutory phase of consultation and is intended to give you the opportunity to comment on our updated proposals and how they have evolved since the initial consultation.

Details on how to contact us and find out more about Great North Road Solar and Biodiversity Park can be found on the back cover of this booklet.

WHO WE ARE

The proposals for the Great North Road Solar and Biodiversity Park are being developed by Elements Green (EG), who has a proven track record in renewable energy development, with 7 gigawatts (GW) of renewable energy development projects globally.

Elements Green is dedicated to developing renewable energy solutions that provide lasting benefits for communities and the environment. The Great North Road Solar and Biodiversity Park, our flagship project, demonstrates our commitment to clean energy, community engagement, and sustainability.

Having received the backing in principle of several key nature charities and trusts, Great North Road Solar Park has been renamed **'Great North Road Solar and Biodiversity Park'**, with a new logo to reflect this.

For more information, please turn to page 8.

Our Phase Two Consultation

The design of Great North Road Solar and Biodiversity Park will be informed by feedback we receive and the results of our ongoing Environmental Impact Assessment process.

Our Phase Two (statutory) Consultation starts on Thursday 09 January. It will run for six weeks, closing on Thursday 20 February 2025. We are asking for feedback to be provided on or before this date.

We want to hear your feedback on topics such as:

- Our updated proposals
- Our environmental mitigation and enhancement plans, including the plans for new permissive paths
- The findings in our Preliminary Environmental Information Report (PEIR)
- Our NG+ Community Benefit Fund, including schemes and initiatives we could support or deliver to benefit local communities

HAVE YOUR SAY

During this time, you can engage with our proposals in a variety of ways:



ATTEND ONE OF OUR COMMUNITY INFORMATION EVENTS

We are holding a series of information events across the area, as well as a community webinar. These events provide an opportunity to view materials and discuss the proposals with members of the project team.



VISIT OUR PROJECT WEBSITE

Our dedicated website (www.gnrsolarpark.co.uk) provides the latest project information, including relevant documents and answers to frequently asked questions (FAQs). Here you can view and download all consultation materials and information.



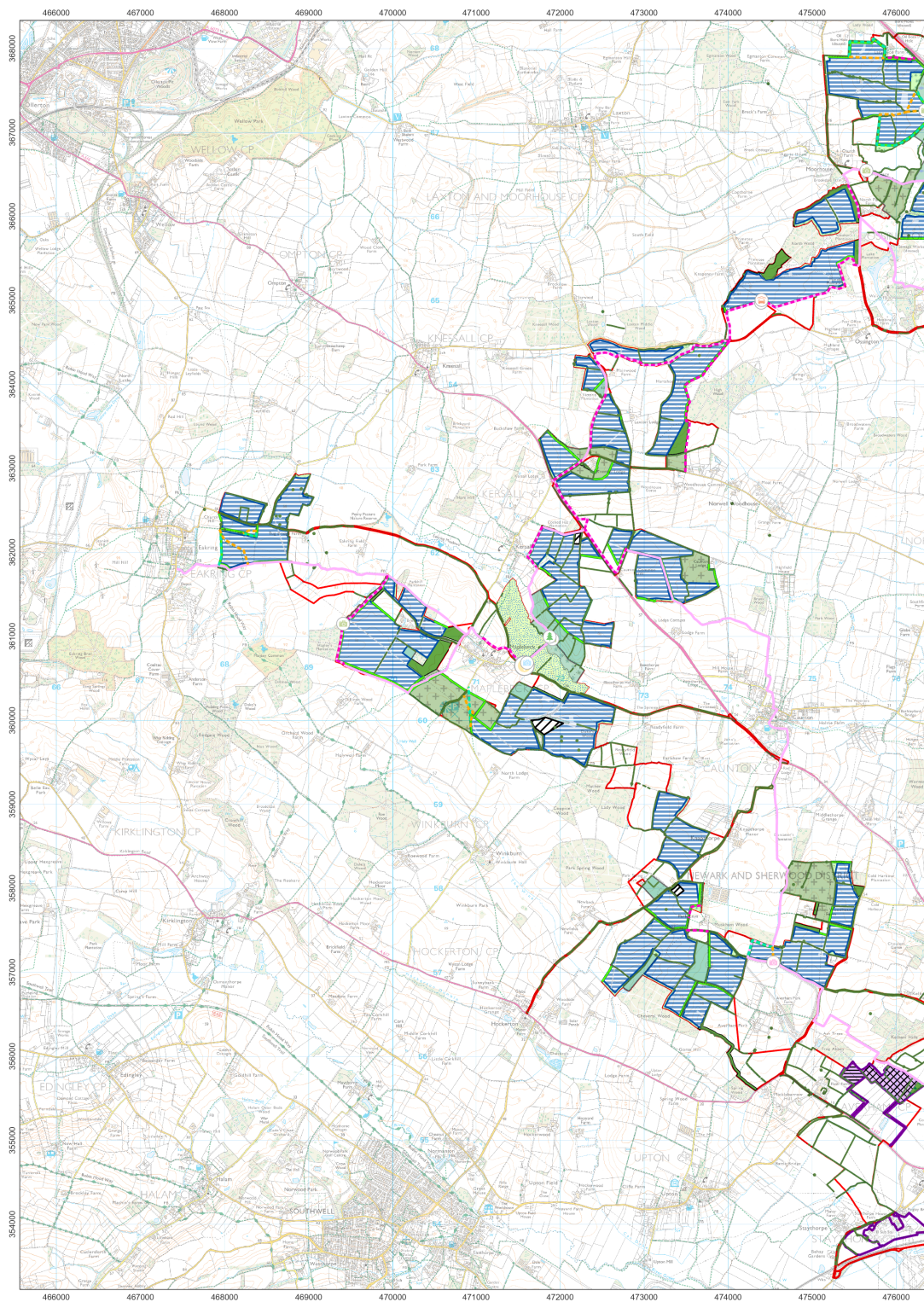
CONTACT OUR TEAM

A freephone information line, email address, and freepost address are available for anyone wishing to contact us to answer questions you may have about the project. These details are listed on the back page of this booklet.



PROVIDE YOUR FEEDBACK

We want to hear your views on our updated proposals. You can submit written feedback via our website, by completing a feedback form at one of our events, by writing to us, or by email. Please contact us if you're not sure how best to provide your feedback.



This map is for illustrative purposes only. Please visit our website to view and download Project maps.



Ref:

Great North Road Solar and Biodiversity Park Preliminary Environmental Information Report

Our Phase Two Proposals

Our refined proposals for the Great North Road Solar and Biodiversity Park have been informed by the feedback received during Phase One Consultation, as well as ongoing environmental assessments.

NON-STATUTORY CONSULTATION SNAPSHOT

During our initial consultation in January and February 2024, community feedback highlighted key priorities and concerns, guiding the direction of the proposals for the Great North Road Solar and Biodiversity Park. Responses from the local community, including parish councils and community groups, helped us focus on the aspects that matter most to residents, including visual impact, ecology, flood risk, local employment, and recreational amenities. This consultation was pivotal in ensuring that the project's goals align with community needs.

OUR PHASE TWO PROPOSALS

- With an anticipated capacity of 800 MW, Great North Road Solar and Biodiversity Park could provide enough electricity for **400,000 homes and businesses**.
- Great North Road Solar and Biodiversity Park aims to improve existing public rights of way, and now includes plans for **19 km of new permissive paths across the site**.
- Approximately 800 acres will be dedicated for **wildlife enhancement** that will create improvements to habitats.
- The Great North Road Solar and Biodiversity Park will include the planting of **50,000 trees** and the addition of **25 km of hedgerows**.
- The project would create around **400 job roles during its construction**, with a further **60 needed permanently** once its operational.
- The Great North Road Solar and Biodiversity Park would offer a community benefit package, known as NG+, which has the potential to make available around **£1 million per annum to support local initiatives**.

We have sought to evolve our vision for Great North Road Solar and Biodiversity Park. The following pages detail the specific actions taken by Elements Green in response to community feedback received so far.

We ... designed to protect your Countryside Views

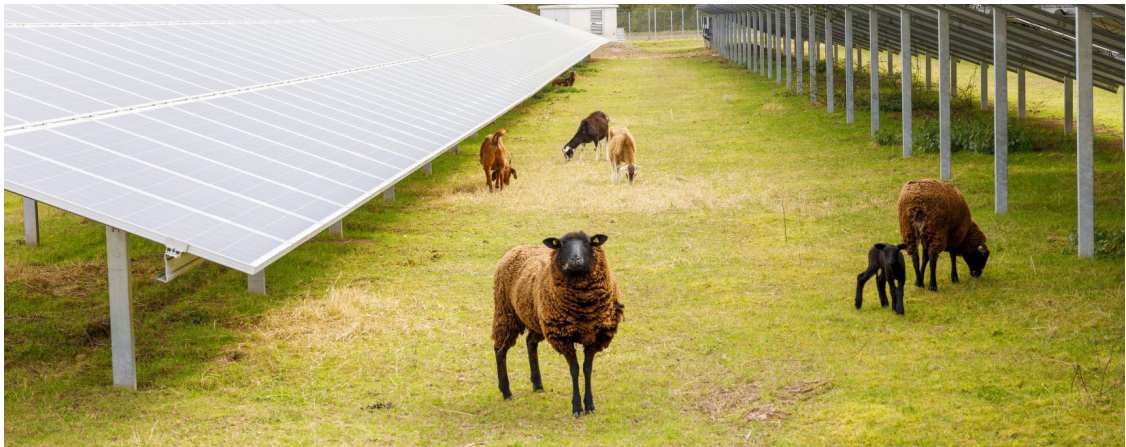
EG has developed a landscape-sensitive design that respects the local aesthetic. We have incorporated a range of measures to ensure the project complements the natural surroundings and minimises visual impact.

Key Commitments:

- + Extensive Natural Screening:** To shield the park from view we will plant over 50,000 native trees and establish 46 km of hedgerows.
- + Low-Profile, Well-Spaced Solar PV Arrays:** Solar panels are designed to be low-profile respecting the area's topography, minimising height and density while preserving key sightlines.
- + Design Adjustments Based on Visual Impact Feedback:** In direct response to feedback, we have removed select arrays from highly visible areas and relocated the substation.

NEXT STEPS

We remain committed to further consultation on landscape impact, inviting residents to review updated visual simulations to guide additional adjustments.



We ... designed to enhance Local Ecosystems

We have established a Biodiversity Steering Group (BSG), with respected conservation partners, including the RSPB, Sherwood Forest Trust, Nottinghamshire Wildlife Trust, and Trent Rivers Trust.

Key Commitments:

- + More:** Increasing the diversity of habitats to support birds, insects, pollinators and small mammals, helping deliver a Biodiversity Net Gain across the site.
- + Bigger:**
 - Over **50,000** native trees
 - **46 km** of new hedgerows
 - **850** acres of native wildflower meadows, grasslands and wetlands.
- + Better:** Enhancing habitat quality through active management to improve ecological value.
- + Joined-up:** Establishing wildlife corridors to reduce habitat fragmentation.

Collaborative Conservation Partnerships:

RSPB:

"We are excited to unite expertise with Elements Green to create a future where both wildlife and clean energy thrive."

Sherwood Forest Trust:

"We'll develop a robust plan to improve habitats within the Great North Road Solar and Biodiversity Park."

NEXT STEPS

- Further BSG design meetings to refine the details of the biodiversity enhancement areas.



We ... diversified the agricultural use of the land by design

This is a temporary land use, not a permanent loss of farmland, guaranteed by both the planning process and the bond in the land agreements.

Key Commitments:

- + **Avoided siting on the highest grade land** based on data provided by Natural England.
- + **The decommissioning bond** guarantees funding for the removal of equipment after 40 years.
- + **Collaboration with Local Farmers for Dual Land Use:** Working with local farmers, sheep will graze under and around the solar PV arrays.
- + **Removing Intensive Farming:** Eliminating nitrates and phosphates, supporting soil health, biodiversity and improving water quality.

NEXT STEPS

- Finalise detailed agricultural land classification assessments
- Design water supply to fields for grazing purposes.



We ... created a Rooftop PV Grant Scheme

The UK Solar target of 47 GW by 2030 requires both ground-mounted and rooftop PV. Part of our NG+ programme provides renewable energy-saving solutions for local residents and businesses.

Key Commitments:

- +** **Rooftop Solar Funding:** Funding is available for local homes, businesses, and public buildings.
- +** **Energy Efficiency Surveys:** In 2024, with over 80 people registering interest, we conducted free energy efficiency surveys. This will continue in 2025.
- +** **Energy Efficiency Upgrades:** Grants for energy-efficient upgrades, including insulation, LED lighting, household batteries, car chargers and efficient heating systems.

NEXT STEPS

- Continue to expand NG+ funding and support for energy efficiency as demand grows.
- First installations are planned for late 2025.



We ... designed the scheme to not increase flood risk

EG has prioritised sustainable water management in the park design. Our partnership with the Trent Rivers Trust (TRT) has enabled the initiation of design of projects to alleviate pre-existing flooding in local villages.

Key Commitments:

- + **Enhanced Drainage:** Planned sward, swales and constructed wetlands will naturally absorb and slow water run-off. A piped drainage network will be installed at the main substation compound and BESS.
- + **Partnership with the Trent Rivers Trust (TRT):** "Our vision is for a healthy, functioning water environment that supports diverse habitats. TRT will help develop, implement, and monitor Natural Flood Management (NFM) interventions to reduce flood risk and increase catchment resilience."
- + **Tree Planting for Soil Stability:** Over 50,000 trees will be planted, increasing water absorption, reducing erosion and slowing rainwater flow, acting as natural barriers.
- + **Pre-existing Flood Prevention Schemes:** NG+ funding for SuDs (sustainable drainage systems), culvert expansions, and other water management solutions.

NEXT STEPS

- More detailed drainage surveys and calculations.
- Having carried out hydraulic modelling and site visits, we intend to launch planning applications for the pre-existing flood prevention schemes in 2025
- Trent Rivers Trust, EG, the Environment Agency, the Internal Drainage Board, and our hydrology experts will design and review flood mitigation measures.

We ... expanded Recreational Spaces

EG has designed the park to include green spaces that enhance tourism, provide outdoor activities, and contribute to the overall well-being of residents and visitors alike.

Key Commitments:

- + **New Permissive Pathways and Cycling Routes:** The new paths will connect with existing local routes. Certain new paths are designed for horse riding and cycling, and are landscaped where suitable.
- + **NG+ Support for Community Initiatives:** Funding will be directed towards local recreational projects, such as community gardens, allotments and outdoor fitness.
- + **Incorporated a large new community orchard:** Supporting health and well-being.

NEXT STEPS

- Finalise the footpath designs in line with community feedback.
- Continue working closely with local councils, recreational organisations, and community groups.
- Establish maintenance plans to keep these recreational spaces safe and clean.



We ... Sourced what we can from the UK

Following feedback, we researched what products we could procure from the UK to minimise imports from Asia. Electrical cable and steel for mounting frames can be purchased from the UK. EG is a London based developer delivering sustainable investment to the UK regions.

Key Commitments:

- + **Use of British Steel:** Brian McGhee, Managing Director of supplier Pro-renewables, says: "Using British Steel together with innovative manufacturing, we can significantly reduce the carbon footprint of the project whilst at the same time reducing the number of vehicle movements required which will benefit the local towns and villages."
- + **Commitment to UK-Based Sourcing:** Where possible, materials, technology, and services for the park are sourced from UK suppliers. Partnerships with local renewable businesses and service providers such as printers, accommodation and food suppliers are prioritised.
- + **Recycling Partnership with UK Clean Steel producer:** We are discussing a buy-back arrangement, ensuring the steel used in the mounting frames will be recycled at the end of the project. This closed-loop approach promotes the circular economy.
- + **NG+ Investment in Local Businesses:** Through NG+, we are funding local renewable energy and green technology businesses. Grants are available to both start-ups and established companies, fostering resilience and growth in the renewable energy sector.

NEXT STEPS

- Continue engaging UK suppliers and sharing updates on sourcing progress, economic contributions, and regional employment benefits.



We ... launched the EG Academy

EG is committed to educating and empowering the local workforce and providing high value job opportunities. For this reason we created a renewable energy skills Academy. EG Academy offers local people of all ages free online and on-site CPD accredited learning.

Key Commitments:

- + **Launch of the EG Academy:** Designed for local talent, the EG Academy offers comprehensive courses covering all stages of renewable energy projects
 - from conception to completion
 - helping prepare people for future careers in this rapidly growing sector.
- + **Support for Local Green Businesses and Start-ups:** By supporting sustainability focused start-ups, we aim to stimulate innovation in the green economy, creating new pathways for job creation.
- + **Apprenticeships and Green Skills Training:** We will offer apprenticeships, PHDs and vocational training tailored to renewable energy related topics.
- + **School Partnerships and Educational Programmes:** EG Academy is partnering with local schools to introduce renewable energy education, including workshops, classroom materials, and interactive sessions on sustainability. Students will also have the chance to visit the park, gaining hands-on experience with renewable energy in action.

NEXT STEPS

- With over 250 expressions of interest in the EG Academy so far, we anticipate many local students attending our classes.
- Arrange PHDs with local universities on innovative research.
- Continue to expand green job training and educational resources.

We ... prioritised Safety, Noise Reduction & Heritage

These concerns are addressed in detail in the project's Preliminary Environmental Information Report (PEIR).

Key Commitments:

- + Safety in Battery Energy Storage (BESS):** The BESS will be designed with robust safety features, including 24/7 monitoring, fire suppression systems and low-noise cooling ensure safe, quiet operation.
- + Respecting Archaeology and Local Heritage:** Comprehensive assessments are ongoing to identify and protect historically significant areas. Based on these findings, design adjustments will be made to avoid sensitive locations.
- + Noise Reduction:** The main substations and the BESS have been positioned away from sensitive properties and their occupants. They may be equipped with acoustic walls if required, following further assessment.

NEXT STEPS

- A copy of the PEIR and the Non-Technical Summary are available at our events and on our project website for community review, offering comprehensive answers to public questions.
- Continue engaging with the community and interdisciplinary experts on technical matters.

We ... Planned Lasting Benefits Through NG+

EG has launched the NG+ scheme EG has launched the NG+ scheme, which has the potential to make available around £1 million per annum, to create a positive, lasting impact on the region surrounding the park. Throughout 2024, we engaged with local communities to identify key priorities, ensuring that NG+ funding will directly address their needs. This ongoing dialogue will continue in 2025.

Key Commitments:

+ NG+ Trust managed by Nottingham Community Foundation (NCF): To guarantee fair and transparent distribution of funds, we have partnered with NCF charitable trust to manage the NG+ Trust.

+ Investment in Green Job Skills Development: NG+ funding supports development through training and apprenticeships in renewable energy. Partnerships with local schools, colleges, and training providers will equip residents with in-demand skills.

+ Enhancing Local Well-being and Biodiversity: NG+ funding supports initiatives like community gardens, wildlife habitats, and recreational amenities. So far EG's discretionary funding has included Maplebeck's flood shed, the sponsorship of Muskham's youth football club, new kitchen flooring for Egmanton's Village Hall and subsidising a living roof garden at the Air and Space Institute.

NEXT STEPS

- Continue developing and delivering projects and, alongside NCF, continue to engage with community organisations and residents to ensure NG+ aligns with evolving local needs.



DCO Process

As the generation capacity for Great North Road Solar and Biodiversity Park is above 50 MW, the project is classified as a Nationally Significant Infrastructure Project (NSIP).

The 2008 Planning Act defines the consent regime for an NSIP. It requires that we apply for a Development Consent Order (DCO), which we will submit to the Planning Inspectorate (PINS) rather than the local planning authority.

The final decision of whether the project gets consent will be decided by the Secretary of State, following a thorough examination period and recommendation carried out by PINS.

Our focus is on undertaking a transparent and robust consultation, and we must demonstrate how we have consulted with councils, technical and statutory stakeholders, landowners and members of the community. When we submit our DCO application to PINS, it will be accompanied by a Consultation Report, setting out how we have consulted and how we have considered the feedback that we have received.

Our final DCO Application will also include an Environmental Statement, a document that details how the potential impacts of the project will be mitigated and where possible, environmental enhancements provided. Our Preliminary Environmental Information Report (PEIR), which we are consulting on during this consultation phase and is available to view online, highlights the assessments that have been undertaken to date, and how we seek to mitigate against impacts.

Further detail on the Environmental Impact Assessment (EIA) process can be found on pages 18 and 19 of this booklet.

Find out more information about the DCO process via this link:

<https://infrastructure.planninginspectorate.gov.uk/>

Environmental Impact Assessment (EIA)

We are undertaking an Environmental Impact Assessment (EIA) for Great North Road Solar and Biodiversity Park.

The purpose of EIA is to identify, describe, and assess the likely significant effects (both adverse and beneficial) of the project on the environment, which includes the effect on people and ecology.

As Great North Road Solar and Biodiversity Park is a NSIP, the following are the key EIA reporting stages through to submission of the DCO application:

EIA SCOPING

The Scoping Report sets out our proposed approach to assessing and reporting on the potential environmental effects of our proposals. The scope of the EIA is consulted on with PINS and consultees including the Local Planning Authorities. Our EIA Scoping Report was submitted to PINS on 08 November 2023, and PINS issued their Scoping Opinion on 19 December 2023. The Scoping Opinion informed the scope of the EIA undertaken on the proposals, which is then presented in the Preliminary Environmental Information Report.

PRELIMINARY ENVIRONMENTAL INFORMATION (PEIR)

The PEIR provides the Applicants preliminary assessment of the potential environmental effects of the project. The Applicant must prepare and consult on the PEIR as part of a statutory consultation that includes statutory consultees (such as the Environment Agency, Natural England, Newark and Sherwood District Council and Nottinghamshire County Council), persons with land interests and members of the public.

ENVIRONMENTAL STATEMENT (ES)

Following consultation on the PEIR, the Applicant must submit an ES with the DCO application that reports on the likely significant effects of the project, along with any proposed mitigation to reduce effects. The ES is taken into account by the Secretary of State when deciding on whether to grant a DCO.

We are currently at the third stage, as we are consulting on the PEIR as part of this statutory phase of consultation.

The environmental assessment reported in this PEIR is ‘preliminary’ and is based on the design and layout of the project as it currently stands; it does not represent a final assessment of the project.

The purpose of consultation is to gain feedback on the preliminary design, and environmental assessment undertaken to date. The feedback received will be considered as the project continues to be refined, and in accordance with the iterative approach to EIA will inform the final assessment of environmental impacts to be contained within the ES accompanying the DCO application.

PRELIMINARY ENVIRONMENTAL INFORMATION REPORT

The PEIR produced as part of this statutory phase of consultation is split into three volumes and a range of different topics. The structure of the PEIR is as follows:

- Introduction
- The Proposed Development
- Alternatives and Design Evolution
- EIA Methodology
- Local Ecology and Biodiversity
- Landscape and Visual
- Archaeology and Local Heritage
- Traffic and Access
- Land Use and Agriculture
- Hydrology and Flood Risk
- Recreation and Amenity
- Noise and Safety
- Socio-Economics
- Climate Change

You can access the full PEIR, along with a shorter ‘Non-Technical Summary’ from the Document Library on our website: www.gnrsolarpark.co.uk

You can also request a hard copy of the PEIR or specific sections of the PEIR via the project’s communication channels. Please note that a reasonable charge may apply to providing printed copies of the PEIR.

Information Events

Come and meet our team at one of our community information events.

Our information events will be an opportunity for you to view our proposals and discuss them in person with members of the project team.

We will be holding a total of nine information events during our second phase of consultation, this includes eight in-person events and one online webinar.

A full copy of the PEIR will be available to view at each of the information events. We encourage anyone with an interest in our proposals to come along. You are welcome to drop-in any time during the opening hours.

| Location | Date & Time |
|---|--|
| Maplebeck Village Hall Main Street, Maplebeck, Newark, NG22 0BS | Thursday 23rd January 2pm - 7:30pm |
| Sutton on Trent Sports Club Grassthorpe Rd, Sutton on Trent, Newark, NG23 6QX | Friday 24th January 2pm - 7:30pm |
| North Muskham Rural Community Centre North Muskham, Newark, NG23 6HL | Saturday 25th January 11am - 3pm |
| Laxton Village Hall High St, Laxton, Newark, NG22 0NX | Wednesday 29th January 2pm - 7:30pm |
| Kelham House Country Manor Main Street, Kelham, Newark, NG23 5QP | Thursday 30th January 11am - 3pm |
| Carlton on Trent Village Hall Main Street, Carlton-on-Trent, Newark, NG23 6NW | Friday 31st January 2pm - 7:30pm |
| Eakring Cator Hall Kirklington Road, Eakring, Newark, NG22 0DA | Tuesday 4th February 2pm - 6:30pm |
| Newark Town Hall Newark, Nottinghamshire, NG24 1DU | Wednesday 5th February 11am - 3pm |
| Online Community Webinar Zoom | Monday 10th February 5:30pm - 7:00pm |

Community Access Points

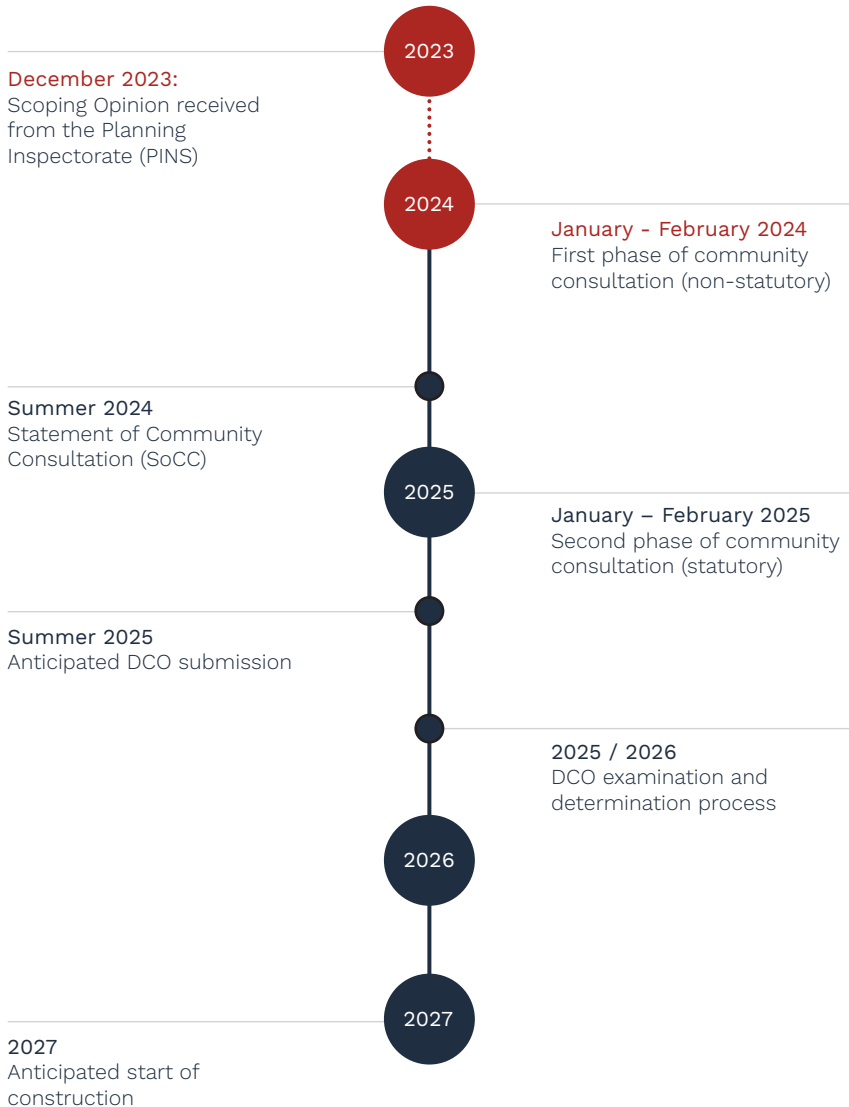
You can pick up hard copies of our Phase Two central booklet and feedback form, as well as view of PEIR Non-Technical Summary (NTS) at one of our Community Access Points (CAPs).

All consultation materials are available to view and download via the project website: www.gnrsolarpark.co.uk

| Location | Opening Times |
|--|---|
| Newark and Sherwood District Council Offices, Castle House, Great North Road, Newark, Nottinghamshire, NG24 1BY | Monday to Friday: 9am - 5pm |
| Southwell Library, The Bramley Centre, King St, Southwell, NG25 0EH | Monday: 9am - 6pm Tuesday, Wednesday and Friday: 9am - 5pm Thursday: 9am - 1pm Saturday: 9am - 3pm Sunday: 11am - 3pm |
| Newark Library, Beaumont Gardens, Balderton Gate, Newark, NG24 1UW | Monday, Wednesday: 9am - 6:30pm Tuesday, Thursday, Friday: 9am - 6pm Saturday: 9am - 4pm |
| Ollerton Library, Forest Rd, New Ollerton, Newark, NG22 9PL | Monday, Friday: 9am - 1pm, 1:30pm - 5:30pm Tuesday: 9am - 1pm Wednesday: 2pm - 5:30pm Saturday: 9am - 12:30pm |

**Current opening times, subject to change by the venue.*

Indicative Project Timeline



**Please note this timeline is indicative and may be subject to change*

Acronym Guide

Below is a list of acronyms in alphabetical order.

- AC:** Alternating Current
- ALC:** Agricultural Land Classification
- BESS:** Battery Energy Storage System
- BNG:** Biodiversity Net Gain
- CAPs:** Community Access Points
- DCO:** Development Consent Order
- DESNZ:** Department for Energy Security and Net Zero
- EIA:** Environmental Impact Assessment
- EPC:** Engineering, Procurement, and Construction
- ES:** Environmental Statement
- GW:** Gigawatt
- MW:** Megawatt
- NG+:** Our community benefit scheme linked to the Great North Road Solar and Biodiversity Park *for more information, please visit <https://ngplus.uk/>
- NGET:** National Grid Electricity Transmission
- NSIP:** Nationally Significant Infrastructure Project
- PEIR:** Preliminary Environmental Information Report
- PEIR NTS:** Preliminary Environmental Information Report Non-Technical Summary
- PV:** Photovoltaic
- SoCC:** Statement of Community Consultation



Contact Us

Please do not hesitate to contact us if you would like to find out more information about Great North Road Solar and Biodiversity Park using any of the communications lines below.



Email: info@gnrsolarpark.co.uk



Call: Freephone 0808 175 4054



Write: Freepost GNR Solar



Visit: www.GNRsolarpark.co.uk

Should you require any documents in an alternative format, please contact us at the details provided.

Please note all graphics and maps in this document are for illustrative purposes only.



2 PHASE TWO FEEDBACK FORM

Great North Road Solar and Biodiversity Park

Phase Two Community Consultation: Thursday 09 January – Thursday 20 February 2025

Phase Two Consultation Feedback Form

Elements Green is developing proposals for a new solar and energy storage park located to the northwest of Newark-on-Trent, Nottinghamshire.

We are inviting you to take part in the second phase of consultation for the Great North Road Solar and Biodiversity Park, which could provide approximately 800 megawatts (MW) AC of clean, affordable energy to meet the power needs of around 400,000 homes.

Have your say

This second phase of consultation is an opportunity for you to provide feedback on our updated proposals for the Great North Road Solar and Biodiversity Park.

We will acknowledge and record all the comments submitted to us during the consultation, taking them into consideration to help inform our decisions as we develop and finalise our proposals.

You can provide your written feedback by filling in this form, completing our online feedback form on our website, or sending a scanned copy via email. You can also provide written feedback through our communications channels below.



Visit: www.gnrsolarpark.co.uk



Call: Freephone 0808 175 4054



Email: info@gnrsolarpark.co.uk



Write: FREEPOST GNR SOLAR

*You do not need a stamp

If you have any questions or would like guidance in responding to this consultation, please contact us by email at **info@gnrsolarpark.co.uk** or by calling the community relations team by freephone on 0808 175 4054.

Please note that the deadline for the submission of feedback is **23:59pm Thursday 20th February 2025** (on or before this date).

You do not have to supply personal details; however, it will enable us to contact you regarding your feedback, if necessary. Your personal details will be stored in compliance with the GDPR by Counter Context, acting on behalf of Elements Green, and will not be shared with any third parties.



About you

Name:

Organisation: (if applicable)

Address:

Postcode:

Email Address:

Telephone:

Would you like us to keep you updated?

Please let us know if you agree for us to contact you with any future updates regarding the project. This may include sharing the results of this phase of consultation with you and notifying you of the project's development. If you agree to being contacted, please provide your email address and/or postal address above and confirm your preferred contact method below.

☐ I would like to be kept informed of project updates

☐ Please contact me by email

☐ Post

What is your age?

☐ Under 18

☐ 18-24

☐ 25-34

☐ 35-44

☐ 45-54

☐ 55-64

☐ 65-74

☐ 75 and over

☐ Prefer not to say

General

1.) How would you describe your interest in the Great North Road Solar and Biodiversity Park?

☐ Local resident

☐ Local representative

☐ Landowner

☐ Local business owner

☐ Regular visitor

☐ Local interest group (if so, please name)

☐ Statutory organisation (if so, please name)

☐ Other (please specify)

2.) As a principle, what is your view of the need for installing ground-mounted solar infrastructure in the UK to meet the Government's commitment to achieving net zero carbon emissions by 2050?

☐ I agree with the need to install ground-mounted solar infrastructure

☐ I do not feel I understand enough about the need to install ground-mounted solar infrastructure

☐ I do not agree there is a need to install ground-mounted solar infrastructure

Project specific feedback

3.) Based on our updated proposals, what are your views on the Great North Road Solar and Biodiversity Park?

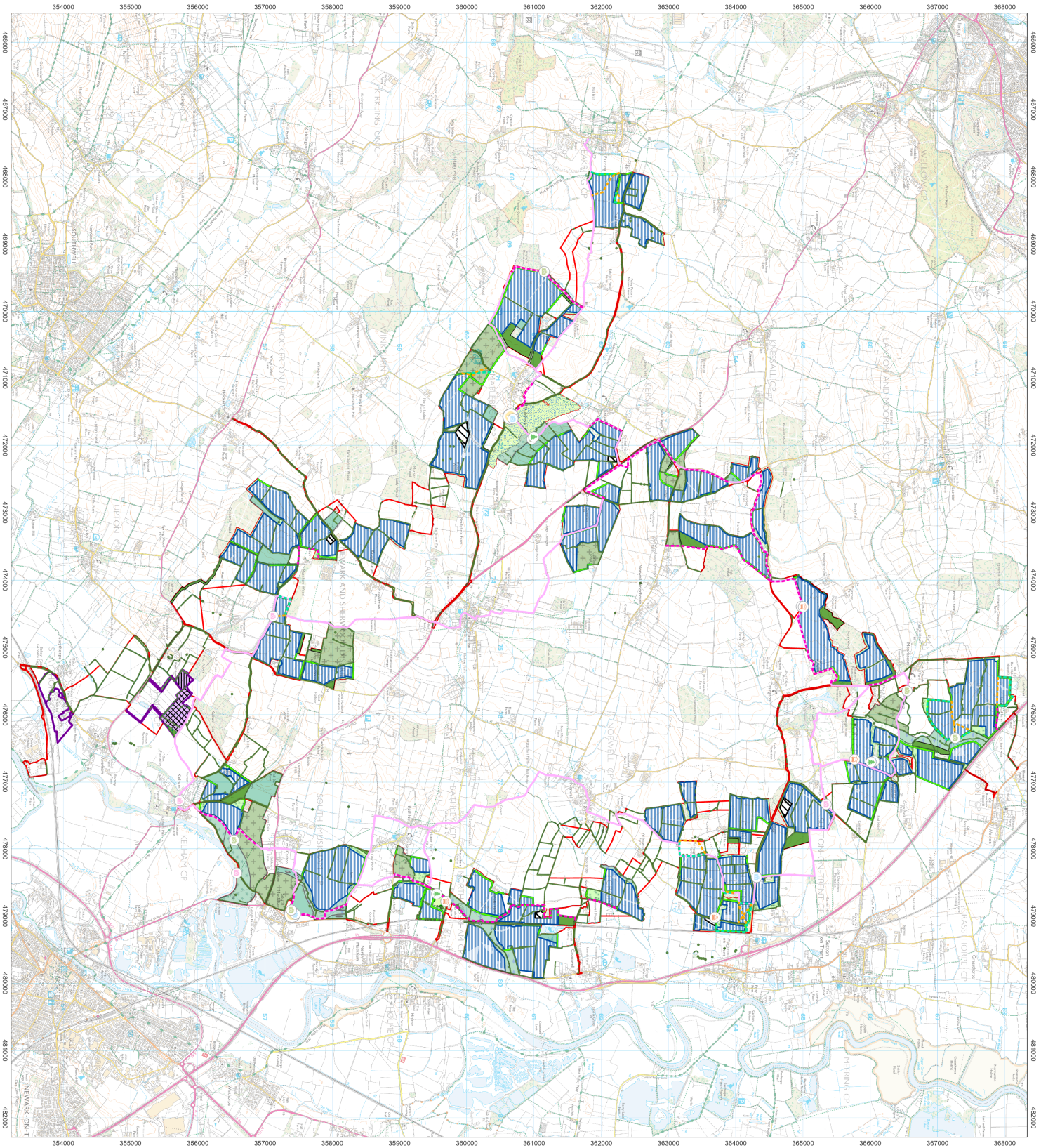
- ☐ I support the proposals
- ☐ I would like changes to be made to be able to support the proposals
- ☐ I do not support the proposals
- ☐ I have no opinion

4.) Which aspects of the project are most important to you?

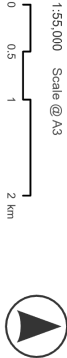
The Great North Road Solar and Biodiversity Park project team are considering the following topics carefully as we continue to develop our proposals.

Environmental assessments have been carried out, and will continue to be undertaken to determine any potential impacts and how they can be mitigated. In the following table, please tick the topic areas which are most important to you. You can add further detail regarding the topic areas when responding to Question 5.

| Tick box | Topic area |
|----------|---|
| | Local ecology and biodiversity This includes protecting existing wildlife and exploring opportunities to improve ecology and biodiversity across the site area. |
| | Landscape and visual This includes any visual impacts and how we can screen the solar farm from particular local viewpoints. |
| | Archaeology and local heritage This includes ways that our proposals may interact with local heritage sites and the sharing of any archaeological findings. |
| | Traffic and access This includes the managing of vehicles and deliveries associated with the solar farm. |
| | Land use and agriculture This includes how we can best manage the land during the operation of the solar farm, including opportunities for continued agricultural use. |
| | Hydrology and flood risk This includes considering the interaction with watercourses and rainfall in the area. |
| | Recreation and amenity This includes maintaining existing Public Rights of Way and exploring opportunities to deliver new routes and amenities across the site area. |
| | Noise and safety This includes any areas you think may need additional mitigation and screening. |
| | Socio-economics and tourism This includes opportunities to involve local businesses and people in the construction and operation of GNR Solar and Biodiversity Park, supply chain, and education opportunities. |
| | Climate change and energy need For example, the need for large-scale solar projects and the carbon footprint of the project. |
| | Other (please detail) Please list any other topics that you would like our team to consider: <div></div> |



- Order Limits
- Proposed Solar Array Areas
- Substation Areas
- BESS and 400kV Substation
- Development Areas
- 400kV Substation
- BESS
- Landscape & Ecology
 - Existing Hedgerows
 - Proposed Hedgerows
 - Proposed Woodland
 - Proposed Hedge and Tree Belt
 - Retained Agricultural Land - enhanced ecological management
 - Proposed Permanent Grassland
 - Proposed Green Corridor
 - Proposed Riparian Corridor
 - Proposed Wildlife Site
 - Proposed Community Orchard
 - Proposed Grassland (PV areas) - species diverse
 - Target area for ecological enhancement
- Access, Recreation & Interpretation
 - Proposed GNR Circular Long Distance Route
 - Proposed New Permissive Route
 - Proposed Public Right of Way Diversion
 - Proposed Public Right of Way Deletion
- Visitor Facilities & Interpretation
 - Visitor Hub
 - Clean Energy Information
 - Ecology/Landscape Information
 - Heritage Information
 - Picnic Area
 - Potential Parking Area (small, c. 4-6 vehicles)



Ref:

PEIR Stage Masterplan - Overview

Great North Road Solar and
Biodiversity Park
Preliminary Environmental
Information Report

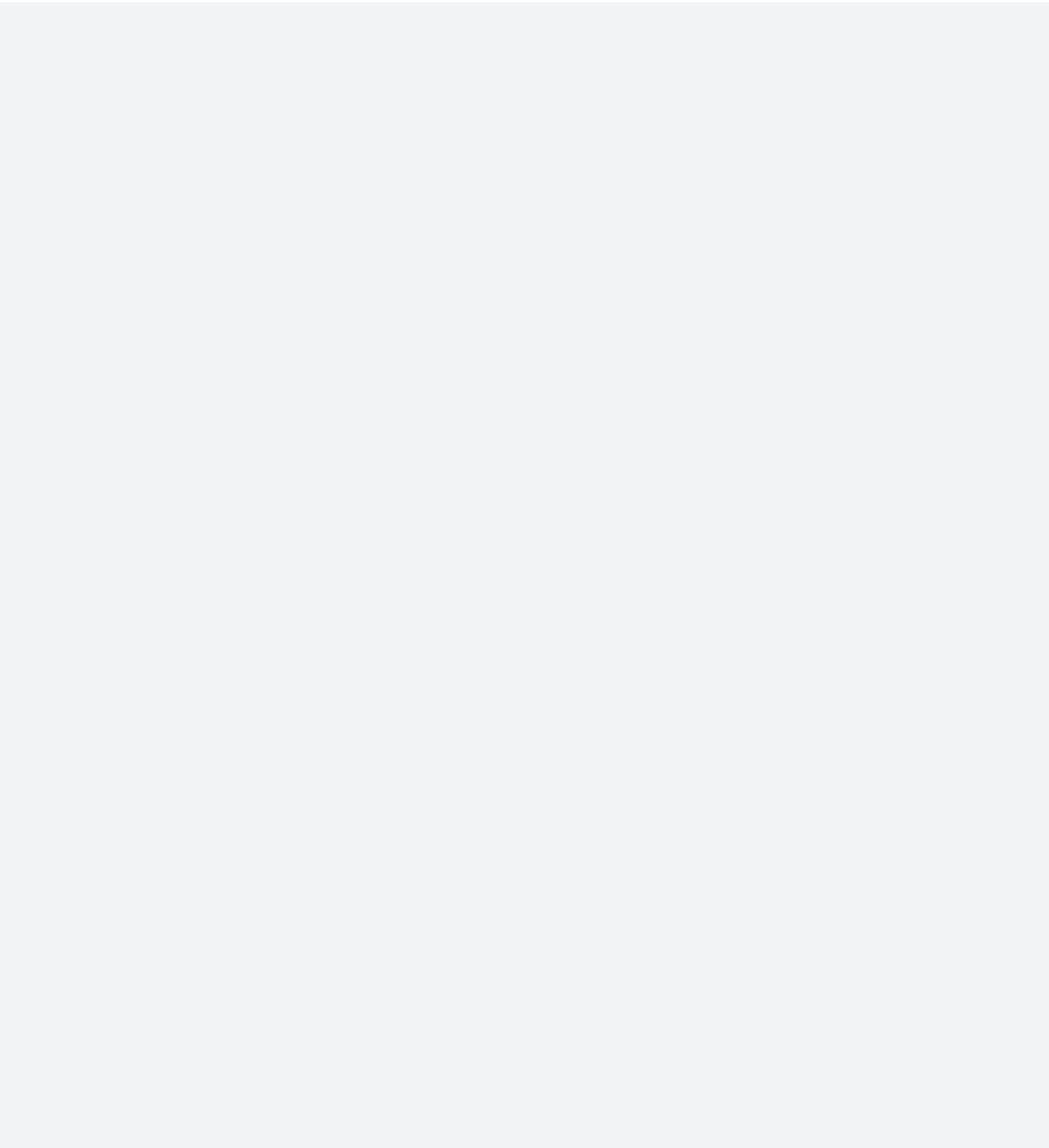
5.) Please provide comments on our updated proposals for the Great North Road Solar and Biodiversity Park.

You may choose to expand on the topic areas in Question 4 in your answer, refer to the Preliminary Environmental Information Report (PEIR), or provide more general feedback. Please feel free to include additional sheets of paper alongside this form if you require more space to fully complete your answer. All feedback received will be considered.

We are keen to hear your feedback on aspects such as:

- Our updated design, as shown on the map to the left
- Additional ecological enhancements you think we should consider as part of the Project Masterplan
- Any comments regarding the routing of new permissive paths that we are proposing
- Any schemes or initiatives we could support or deliver to benefit local communities

If you are providing location specific feedback, please try to include as much detail as possible to help our team identify this. Please use the map to the left to provide location specific feedback should you wish. If you would like to annotate a separate map of the site, please enclose this here.



Question 5 answer box continued

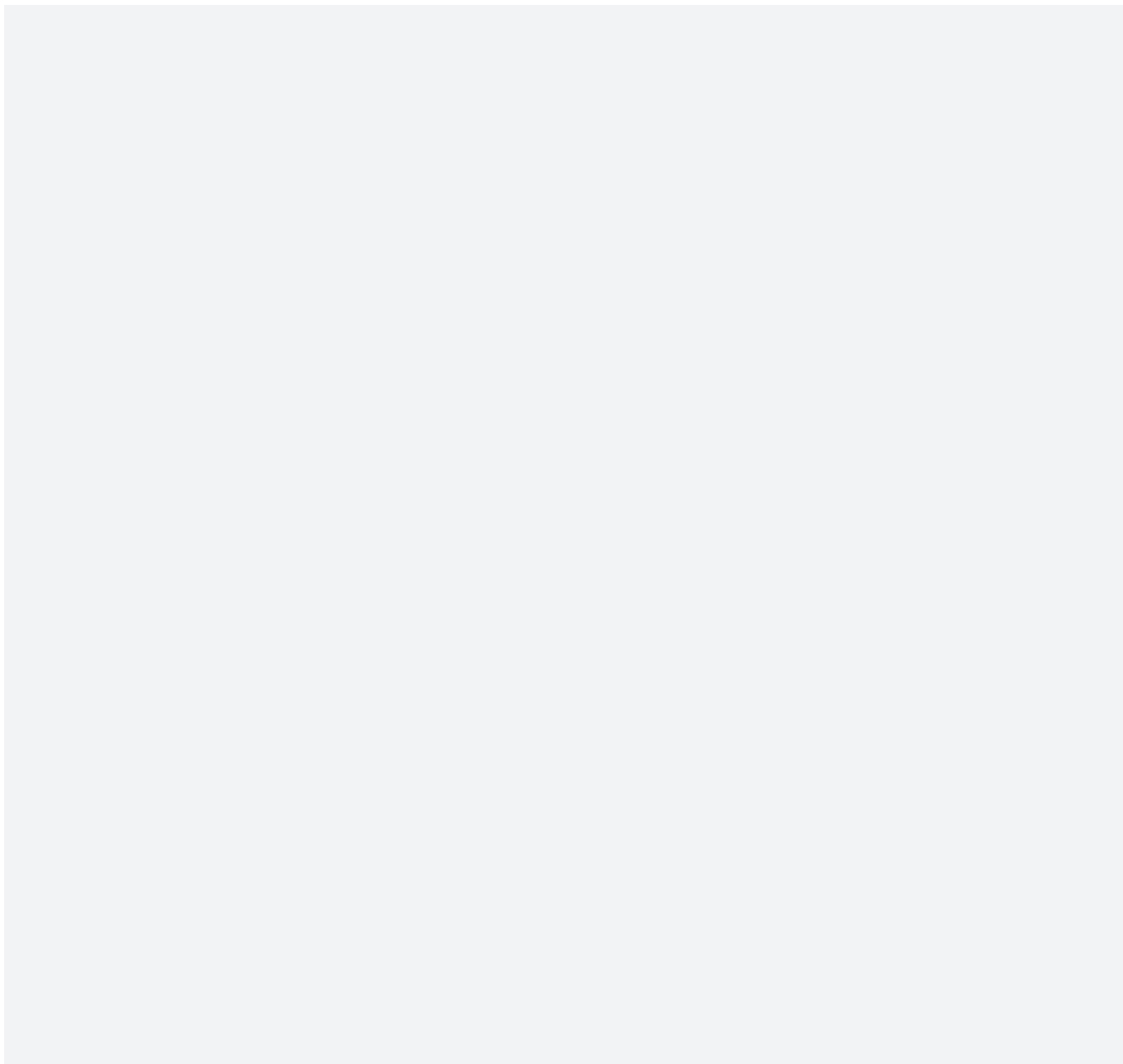
6.) Please provide your feedback on how you think the NG+ Community Benefit Fund should be spent.

Subject to consent being granted, the Great North Road Solar and Biodiversity Park would offer a community benefit package, known as NG+, which has the potential to make available around £1 million per annum to support local causes.

To continue in our efforts to identify and define community benefits, we are keen to hear your suggestions on local schemes and projects we could support or deliver to benefit those communities closest to the project. This may include:

- **Local environment** – Supporting projects to enhance woodlands, meadows, wetlands, and hedgerows, to ensure species protection and foster ecological balance, and develop a flood alleviation strategy to tackle pre-existing flooding.
- **Employment and education** – Collaborating with local educational organisations through education programmes, school visits and apprenticeships to re-skill the local workforce.
- **Wellbeing** – Enhancing local amenities, such as creating new picnic and play areas, and linking new and existing footpaths.
- **Food security** – Looking at projects to tackle food poverty by supporting targeted distribution programmes and work to reduce food waste.
- **Energy efficiency** – Offering grants for energy-related home improvements such as insulation, solar panels and heat pumps.

More information on the NG+ Community Benefit Scheme can be found via this link <https://ngplus.uk/>



Get in touch

To return your completed feedback form, place this feedback form in an envelope and address it to: FREEPOST GNR SOLAR. You will not need a stamp.

Alternatively, you can answer the same questions in our online feedback form, available on the website: www.gnrsolarpark.co.uk. You can also fill in a PDF copy of this feedback form via the project website's document library, and email a copy to us at info@gnrsolarpark.co.uk

Thank you for taking the time to complete this form and providing us with your feedback.

We will acknowledge and record all the comments submitted to us during consultation, taking them into consideration to help inform our decisions as we evolve and finalise our proposals.

All project information can be found by scanning the QR code or visiting our website at www.gnrsolarpark.co.uk

If you have any questions, please do not hesitate to contact our team by:



Visit: www.gnrsolarpark.co.uk



Call: Freephone 0808 175 4054



Email: info@gnrsolarpark.co.uk



Write: FREEPOST GNR SOLAR

*You do not need a stamp



3 PHASE TWO EXHIBITION MATERIALS

“

You said ...

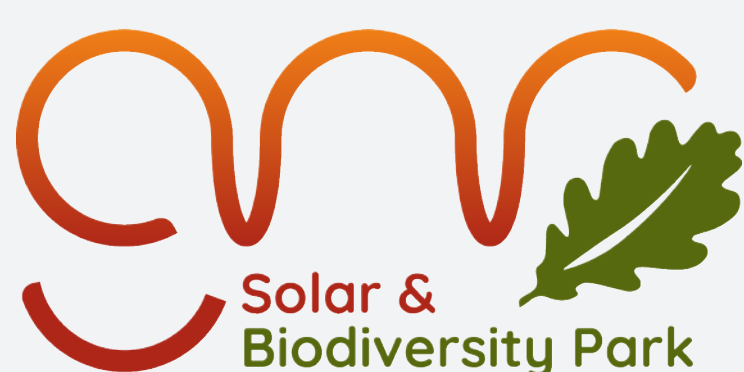


Community Feedback Summary:

“This will industrialise our landscape.”

“The landscapes that will be destroyed are a public good, with value to the nation and wider society, including future generations.”

“The impact on the view of the natural landscape should be mitigated as much as possible.”



We ... designed to protect your Countryside Views

EG has developed a landscape-sensitive design that respects the local aesthetic. We have incorporated a range of measures to ensure the project complements the natural surroundings and minimises visual impact.

Key Commitments:

- + **Extensive Natural Screening:** To shield the park from view we will plant over 50,000 native trees and establish 46 km of hedgerows.
- + **Design Adjustments Based on Visual Impact Feedback:** In direct response to feedback, we have removed select arrays from highly visible areas and relocated the substation.
- + **Low-Profile, Well-Spaced Solar PV Arrays:** Solar panels are designed to be low-profile respecting the area's topography, minimising height and density while preserving key sightlines.

NEXT STEPS

We remain committed to further consultation on landscape impact, inviting residents to review updated visual simulations to guide additional adjustments.





You said ...

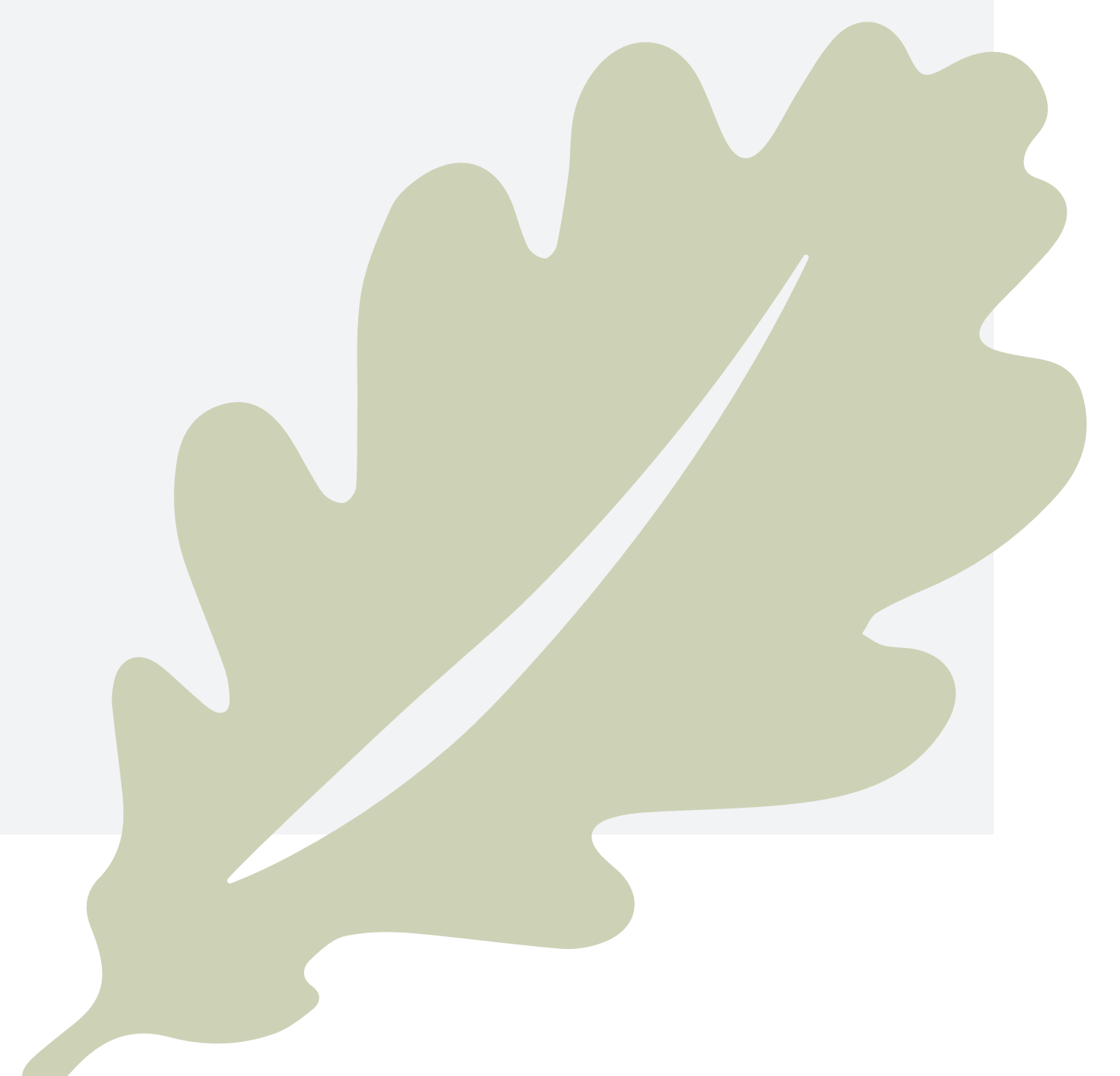
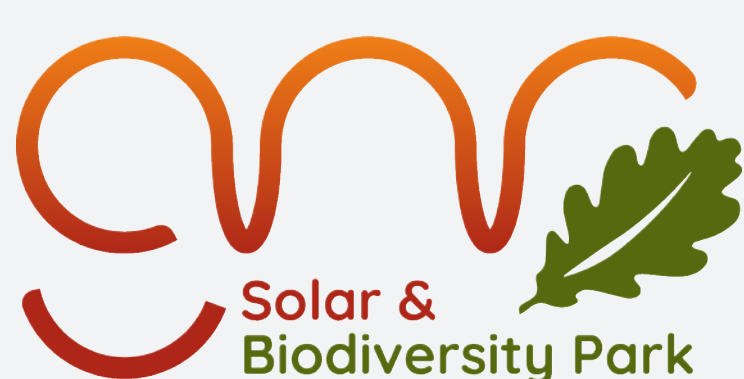


Community Feedback Summary:

“The project is detrimental to the local environment, wildlife, ecology and agriculture.”

“The destruction of natural fields and the habitats of the wildlife in them, both animal and floral, is unimaginable.”

“Would like to see definite plans and partnerships between farmers and horticultural/environmental groups to ensure that soil health and biodiversity is improved.”



We ... designed to enhance Local Biodiversity

We have established a Biodiversity Steering Group (BSG), with respected conservation partners, including the RSPB, Sherwood Forest Trust, Nottinghamshire Wildlife Trust, and Trent Rivers Trust.

Key Commitments:

- + **More:** Increasing the diversity of habitats to support birds, insects, pollinators and small mammals, helping deliver a Biodiversity Net Gain across the site.
- + **Bigger:**
 - Over **50,000** native trees
 - **46 km** of new hedgerows
 - **850** acres of native wildflower meadows, grasslands and wetlands.
- + **Better:** Enhancing habitat quality through active management to improve ecological value.
- + **Joined-up:** Establishing wildlife corridors to reduce habitat fragmentation.

Collaborative Conservation Partnerships:

RSPB:

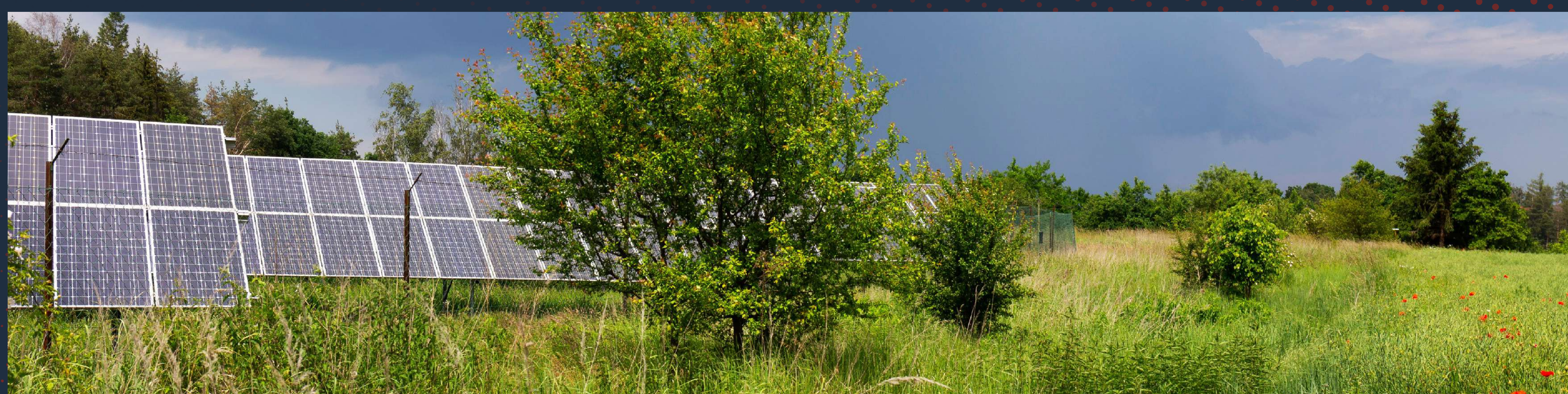
“We are excited to unite expertise with Elements Green to create a future where both wildlife and clean energy thrive.”

Sherwood Forest Trust:

“We’ll develop a robust plan to improve habitats within the Great North Road Solar and Biodiversity Park.”

NEXT STEPS

- Further BSG design meetings to refine the details of the biodiversity enhancement areas





You said ...

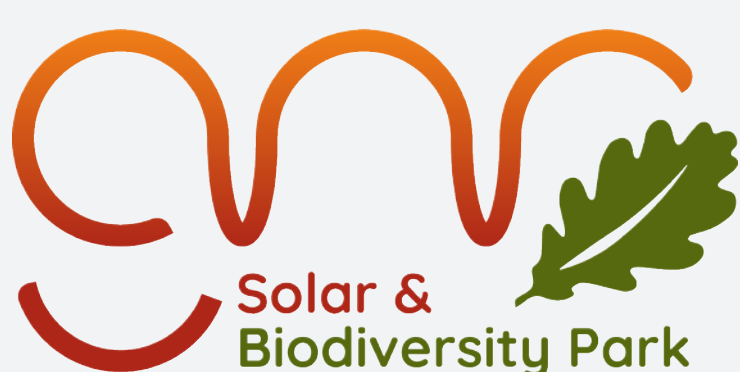


Community Feedback Summary:

“The amount of local farming land covered by this proposal is entirely unacceptable.”

“Farming is of great economical value upon which the sustainability, livelihood, lifestyle, local amenities and local business depend; which would be decimated by these proposals.”

“I like the idea of sustainable farming opportunities such as grazing sheep around the infrastructure.”



We ... diversified the agricultural use of the land by design

This is a temporary land use, not a permanent loss of farmland, guaranteed by both the planning process and the bond in the land agreements.

Key Measures:

- + Avoided siting on the highest grade land based on data provided by Natural England.
- + Collaboration with Local Farmers for Dual Land Use: Working with local farmers, sheep will graze under and around the solar PV arrays.
- + The decommissioning bond guarantees funding for the removal of equipment after 40 years.
- + Removing Intensive Farming: Eliminating nitrates and phosphates, supporting soil health, biodiversity and improving water quality.

NEXT STEPS

- Finalise detailed agricultural land classification assessments
- Design water supply to fields for grazing purposes.





You said ...

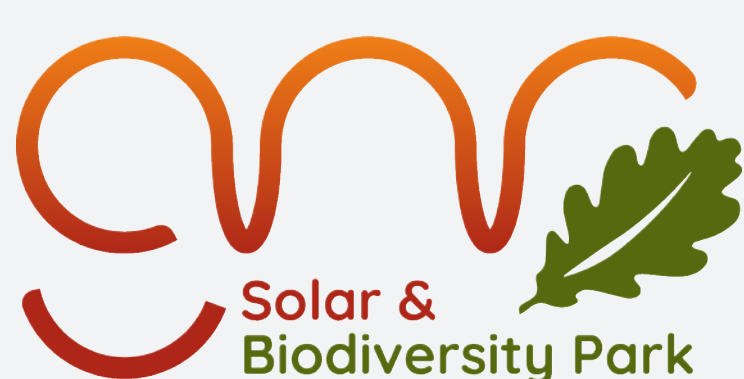


Community Feedback Summary:

“Solar farms should be appropriately located on already brownfield industrial land, on roof tops, on every school, hospital and public building or on steel frames over car parks not in an area which will cause significant visual impact to the residents.”

“Provide support/grants to help charities and small business to have greener energy.”

“Discounted renewable energy initiatives for residents’ homes would be beneficial (solar panels on roofs) if those initiatives can be shown to be of benefit to individual homes.”



We ... created a Rooftop PV Grant Scheme

The UK Solar target of 47 GW by 2030 requires both ground-mounted and rooftop PV. Part of our NG+ programme provides renewable energy-saving solutions for local residents and businesses.

Key Commitments:

+ **Rooftop Solar Funding:** Funding is available for local homes, businesses, and public buildings.

+ **Energy Efficiency Surveys:** In 2024, with over 80 people registering interest, we conducted free energy efficiency surveys. This will continue in 2025.

+ **Energy Efficiency Upgrades:** Grants for energy-efficient upgrades, including insulation, LED lighting, household batteries, car chargers and efficient heating systems.

NEXT STEPS

- Continue to expand NG+ funding and support for energy efficiency as demand grows.
- First installations are planned for late 2025.





You said ...

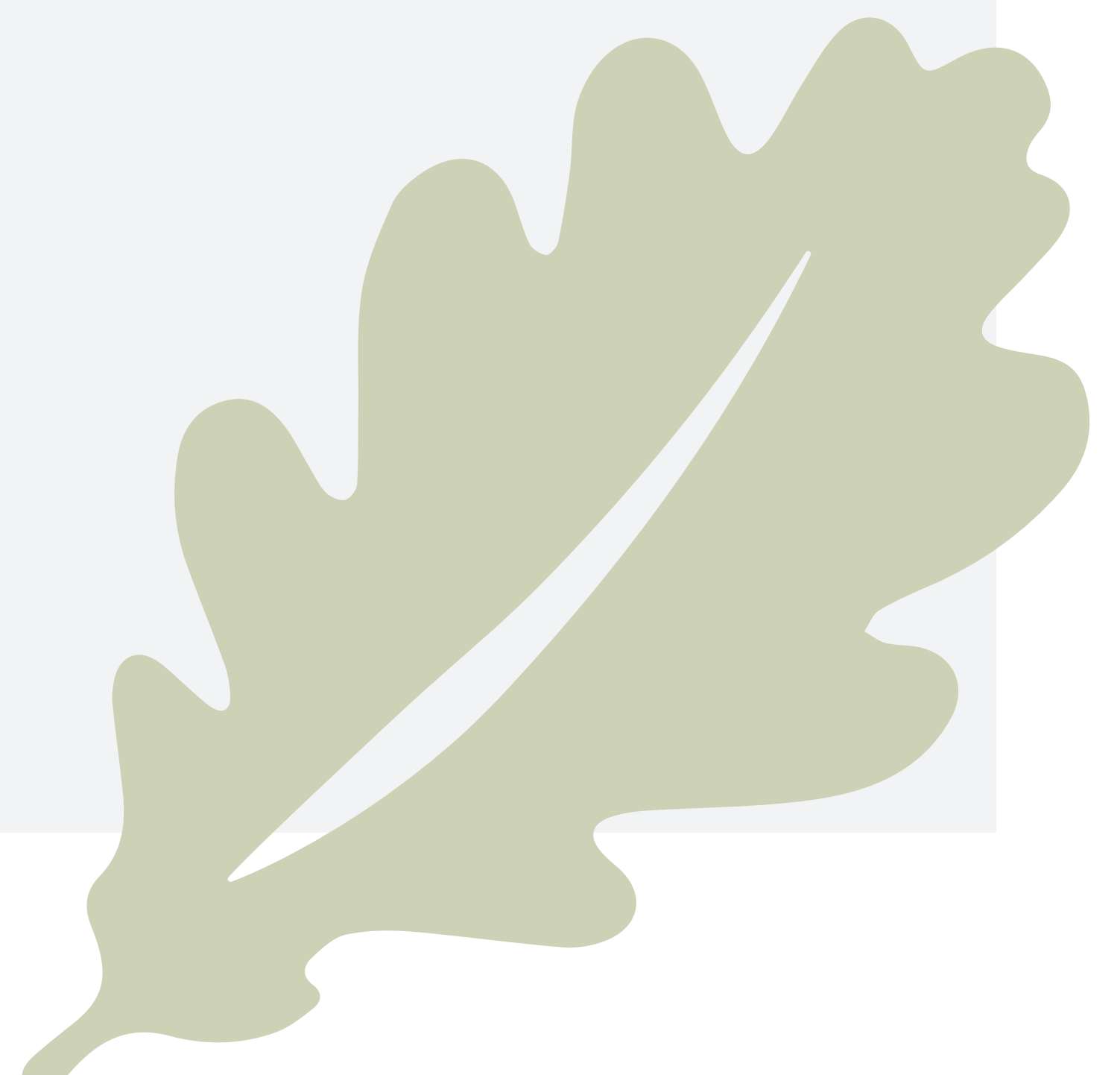
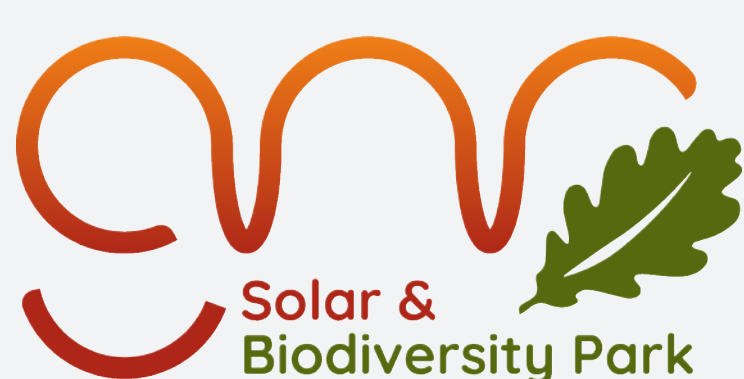


Community Feedback Summary:

“I am especially concerned with the increased possibility of flooding in our already very water affected area.”

“There is an increased flood risk due to the runoff of water due to soil compaction.”

“I think that a significant drive for the project needs to be ensuring that the vast majority of flood risk is mitigated.”



We ... designed the scheme to not increase flood risk

EG has prioritised sustainable water management in the park design. Our partnership with the Trent Rivers Trust (TRT) has enabled the initiation of design of projects to alleviate pre-existing flooding in local villages.

Key Commitments:

- + Enhanced Drainage: Planned sward, swales and constructed wetlands will naturally absorb and slow water run-off. A piped drainage network will be installed at the main substation compound and BESS.
- + Partnership with the Trent Rivers Trust (TRT): “Our vision is for a healthy, functioning water environment that supports diverse habitats. TRT will help develop, implement, and monitor Natural Flood Management (NFM) interventions to reduce flood risk and increase catchment resilience.”
- + Tree Planting for Soil Stability: Over 50,000 trees will be planted, increasing water absorption, reducing erosion and slowing rainwater flow, acting as natural barriers.
- + Pre-existing Flood Prevention Schemes: NG+ funding for SuDs (sustainable drainage systems), culvert expansions, and other water management solutions.

NEXT STEPS

- More detailed drainage surveys and calculations.
- Having carried out hydraulic modelling and site visits, we intend to launch planning applications for the pre-existing flood prevention schemes in 2025.
- Trent Rivers Trust, EG, the Environment Agency, the Internal Drainage Board, and our hydrology experts will design and review flood mitigation measures.



You said ...

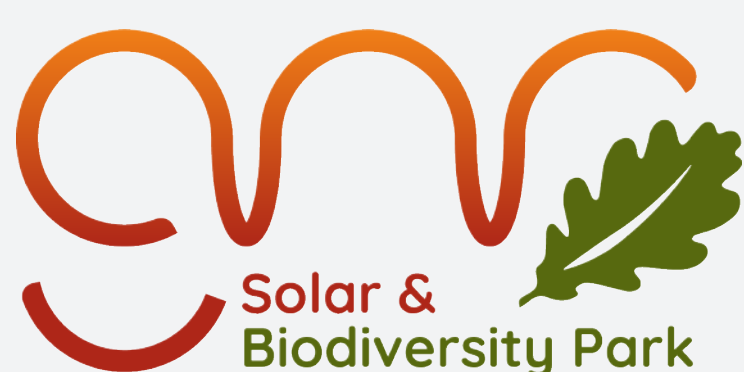


Community Feedback Summary:

“It would be great to see as many local amenities assisted as possible, including a network of cycle trails, footpaths linking all villages affected by the scheme, and play areas for those villages that do not currently have these amenities.”

“I don't want to drive or walk through a sea of panels. We moved to the countryside to enjoy just that and not to be surrounded my metal.”

“Seriously consider the impact of people's wellbeing.”



We ... expanded Recreational Spaces

EG has designed the park to include green spaces that enhance tourism, provide outdoor activities, and contribute to the overall well-being of residents and visitors alike.

Key Commitments:

- + New Permissive Pathways and Cycling Routes: The new paths will connect with existing local routes. Certain new paths are designed for horse riding and cycling, and are landscaped where suitable.
- + Incorporated a large new community orchard: Supporting health and well-being.
- + NG+ Support for Community Initiatives: Funding will be directed towards local recreational projects, such as community gardens, allotments and outdoor fitness.

NEXT STEPS

- Finalise the footpath designs in line with community feedback.
- Continue working closely with local councils, recreational organisations, and community groups.
- Establish maintenance plans to keep these recreational spaces safe and clean.



You said ...

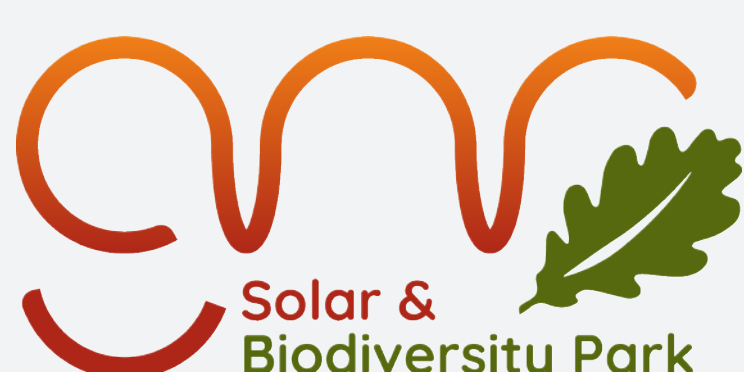


Community Feedback Summary:

“Very important to source equipment and materials from the UK wherever possible.”

“Important to provide employment and manufacturing opportunities.”

“You should consider the origin, manufacture and transport of all the necessary infrastructure, and carbon footprint for all construction, works and materials.”



We ... Sourced what we can from the UK

Following feedback, we researched what products we could procure from the UK to minimise imports from Asia. Electrical cable and steel for mounting frames can be purchased from the UK. EG is a London based developer delivering sustainable investment to the UK regions.

Key Commitments:

- + **Use of British Steel:** Brian McGhee, Managing Director of supplier Pro-renewables, says: “Using British Steel together with innovative manufacturing, we can significantly reduce the carbon footprint of the project whilst at the same time reducing the number of vehicle movements required which will benefit the local towns and villages.”
- + **Commitment to UK-Based Sourcing:** Where possible, materials, technology, and services for the park are sourced from UK suppliers. Partnerships with local renewable businesses and service providers such as printers, accommodation and food suppliers are prioritised.
- + **Recycling Partnership with UK Clean Steel producer:** We are discussing a buy-back arrangement, ensuring the steel used in the mounting frames will be recycled at the end of the project. This closed-loop approach promotes the circular economy.
- + **NG+ Investment in Local Businesses:** Through NG+, we are funding local renewable energy and green technology businesses. Grants are available to both start-ups and established companies, fostering resilience and growth in the renewable energy sector.

NEXT STEPS

- Continue engaging UK suppliers and sharing updates on sourcing progress, economic contributions, and regional employment benefits.



You said ...

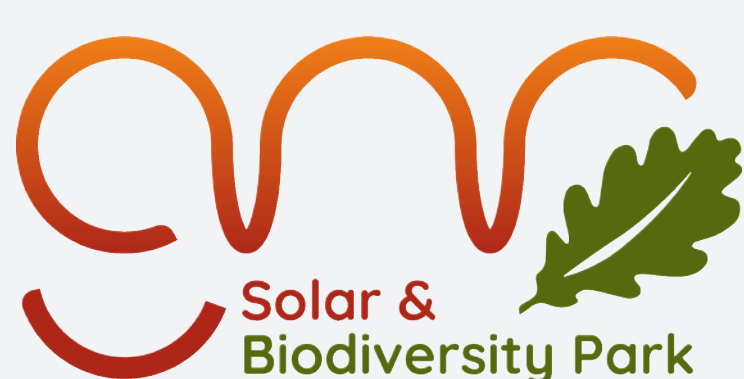


Community Feedback Summary:

“Provide opportunities for environmental based projects for youth organisations.”

“There is a need for opportunities for young people and anything that can provide job and leisure opportunities for them would be welcome.”

“I’m concerned for local businesses, as the solar complex may hinder local tourism and cause businesses to close. What will be done to counteract this?”



We ... launched the EG Academy



EG is committed to educating and empowering the local workforce and providing high value job opportunities. For this reason we created a renewable energy skills Academy. EG Academy offers local people of all ages free online and on-site CPD accredited learning.

Key Commitments:

- + Launch of the EG Academy: Designed for local talent, the EG Academy offers comprehensive courses covering all stages of renewable energy projects - from conception to completion - helping prepare people for future careers in this rapidly growing sector.
- + Support for Local Green Businesses and Start-ups: By supporting sustainability focused start-ups, we aim to stimulate innovation in the green economy, creating new pathways for job creation.
- + Apprenticeships and Green Skills Training: We will offer apprenticeships, PhDs and vocational training tailored to renewable energy related topics.
- + School Partnerships and Educational Programmes: EG Academy is partnering with local schools to introduce renewable energy education, including workshops, classroom materials, and interactive sessions on sustainability. Students will also have the chance to visit the park, gaining hands-on experience with renewable energy in action.

NEXT STEPS

- With over 250 expressions of interest in the EG Academy so far, we anticipate many local students attending our classes.
- Arrange PhDs with local universities on innovative research.
- Continue to expand green job training and educational resources.



You said ...

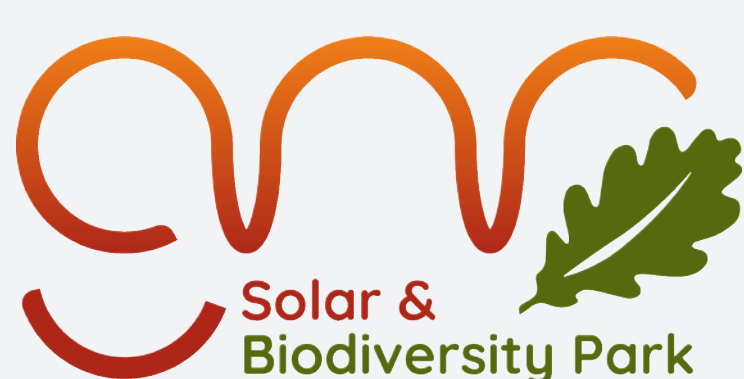


Community Feedback Summary:

“I’m concerned over noise which solar panels and the infrastructure give off which have repeatedly affected animals and wildlife.”

“The project may also affect personal safety of innocent bystanders, ramblers, residents and the public in general.”

“Concerned of the ways in which the proposals may interact with local heritage sites and the sharing of any archaeological findings.”



We ... prioritised Safety, Noise Reduction & Heritage

These concerns are addressed in detail in the project's Preliminary Environmental Information Report (PEIR).

Key Commitments:

- + Safety in Battery Energy Storage (BESS): The BESS will be designed with robust safety features, including 24/7 monitoring, fire suppression systems and low-noise cooling ensure safe, quiet operation.
- + Noise Reduction: The main substations and the BESS have been positioned away from sensitive properties and their occupants. They may be equipped with acoustic walls if required, following further assessment.
- + Respecting Archaeology and Local Heritage: Comprehensive assessments are ongoing to identify and protect historically significant areas. Based on these findings, design adjustments will be made to avoid sensitive locations.

NEXT STEPS

- A copy of the PEIR and non-technical summary are available at our events and on our project website for community review, offering comprehensive answers to public questions.
- Continue engaging with the community and interdisciplinary experts on technical matters.



We ... Planned Lasting Benefits Through NG+



NG+ is an annual £1M community support scheme linked to the proposed Great North Road Solar and Biodiversity Park. EG has launched the NG+ scheme to create a positive, lasting impact on the region surrounding the park. Throughout 2024, we engaged with local communities to identify key priorities, ensuring that NG+ funding will directly address their needs. This ongoing dialogue will continue in 2025.

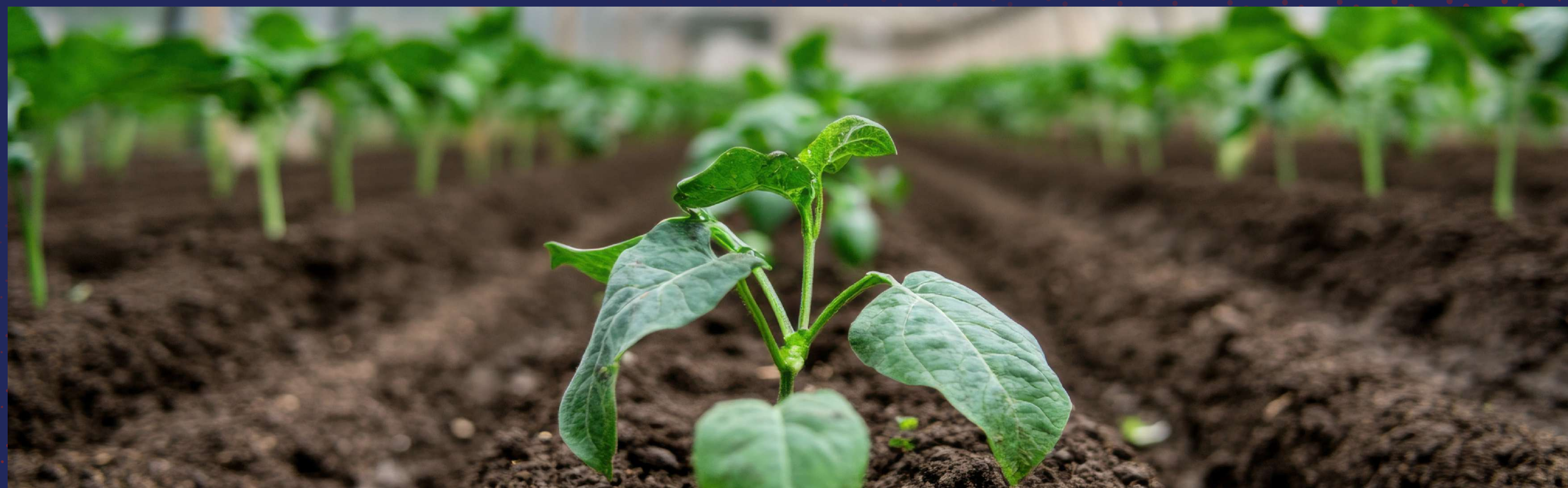
Key Commitments:

- + **NG+ Trust managed by Nottingham Community Foundation (NCF):** To guarantee fair and transparent distribution of funds, we have partnered with NCF charitable trust to manage the NG+ Trust.
- + **Enhancing Local Well-being and Biodiversity:** NG+ funding supports initiatives like community gardens, wildlife habitats, and recreational amenities. So far EG's discretionary funding has included Maplebeck's flood shed, the sponsorship of Muskham's youth football club, new kitchen flooring for Egmanton's Village Hall and subsidising a living roof garden at the Air and Space Institute.

- + **Investment in Green Job Skills Development:** NG+ funding supports development through training and apprenticeships in renewable energy. Partnerships with local schools, colleges, and training providers will equip residents with in-demand skills.

NEXT STEPS

- Continue developing and delivering projects and, alongside NCF, continue to engage with community organisations and residents to ensure NG+ aligns with evolving local needs.



Welcome to our information event!



Phase Two Statutory Consultation

Elements Green (EG) is developing plans for the Great North Road Solar and Biodiversity Park, a new solar and energy storage park located to the northwest of Newark-on-Trent, Nottinghamshire.

Our second phase of consultation is running between Thursday 09 January and Thursday 20 February 2024. During this time, you can provide feedback on our updated proposals.

With a potential generation capacity of around 800 megawatts (MW) AC of solar energy, the scheme has the potential to provide enough clean, affordable energy to meet the power needs of approximately 400,000 homes. The solar park would include 1.5 million ground mounted solar photovoltaic (PV) panels, energy storage, and related infrastructure to connect the scheme to the national grid at Staythorpe substation.

The project boundary comprises approximately 2,900 hectares of agricultural land located to the northwest of Newark. The solar PV area of the development is currently 1,372 hectares with the remaining area designated for enhancement, cables and access.

Acronym Guide:

DCO: Development Consent Order
ALC: Agricultural Land Classification
NSIP: Nationally Significant Infrastructure Project
PEIR: Preliminary Environmental Information Report
EIA: Environmental Impact Assessment
NGET: National Grid Electricity Transmission
BESS: Battery Energy Storage System
EPC: Engineering, Procurement, and Construction
PV: Photovoltaic
BNG: Biodiversity Net Gain
DESNZ: Department for Energy Security and Net Zero

Elements Green: Committed to Renewable Energy, Community, and Sustainability

EG is dedicated to developing renewable energy solutions that provide lasting benefits for communities and the environment. The Great North Road Solar and Biodiversity Park, our flagship project, demonstrates our commitment to clean energy, community engagement, and sustainability.

Project Benefits:



Local Economic and Employment Benefits: The project will create jobs during both the construction and operational phases, with opportunities for local contractors and suppliers. This includes partnerships with Midlands-based businesses for materials, services, and construction.



Environmental and Climate Impact: By generating renewable solar energy, the park reduces reliance on fossil fuels and supports the UK's national goals for carbon reduction and energy independence.



Policy Alignment and Positive Community Impact: As a Nationally Significant Infrastructure Project (NSIP), the Great North Road Solar and Biodiversity Park aligns with government policies on climate and energy resilience. Additionally, through the NG+ scheme, we are funding local initiatives in green jobs, energy efficiency, and community well-being.

Your Feedback, Our Actions: Shaping the Great North Road Solar and Biodiversity Park

Non-Statutory Consultation Snapshot

During our initial consultation, which ran from 16 January until 27 February 2024, community feedback highlighted key priorities and concerns, guiding the direction of the Great North Road Solar and Biodiversity Park. Responses from across the local community, including parishes and community groups, helped us focus on the aspects that matter most to residents, including visual impact, ecology, flood risk, local employment, and recreational amenities. This consultation was pivotal in ensuring that the project's goals align with community needs.

You Said, We Did

We've structured today's event around these themes, introducing the "You Said, We Did" boards to communicate our actions in each area. By actively responding to consultation feedback and launching specific initiatives under each theme, we believe this approach represents gold-standard community engagement within the renewable energy industry.

NSIP Process and Purpose of this Event

As a Nationally Significant Infrastructure Project (NSIP), the project follows a structured planning process, requiring extensive consultation and input. Your feedback at today's event is essential, feeding into the final Development Consent Order (DCO) design to ensure that the Great North Road Solar and Biodiversity Park aligns with community expectations and environmental responsibilities.

Key Themes of Feedback

From the responses gathered, nine key themes emerged, forming the foundation of this consultation event design:

1. Landscape and Visual Impact
2. Local Ecology and Biodiversity
3. Land Use and Agriculture
4. Roof-top and Energy Efficiency
5. Hydrology and Flood Risk
6. Tourism, Recreation, and Well-being
7. UK Manufacturing and Supply Chain
8. Education and Job Creation
9. Noise, BESS Safety, Archaeology, Local Heritage, Climate Change, and Energy Needs

Engaging with Local Councils and Communities

Elements Green extends sincere thanks to the local councils and communities. Special thanks to the following parishes for their engagement: Egmanton, Weston, Ossington, Laxton and Moorhouse, Sutton-on-Trent, Carlton on Trent, Norwell and Norwell Woodhouse, Cromwell, North Muskham, South Muskham/Little Carlton, Bathley, Averham, Kelham and Staythorpe, Caunton, Hockerton, Maplebeck, Kneesall/Kersall/Ompton, Eakring, and Winkburn.

Your Feedback, Our Actions: Shaping the Great North Road Solar and Biodiversity Park

Collaborative Partnerships

In developing these initiatives, EG has partnered with organisations committed to environmental conservation and community resilience. For example:



Together, we will combine renewable energy with habitat restoration, creating a future where both wildlife and clean energy thrive.”

Charlotte Martin-Taylor

Head of Business Conservation
Advice



We’re working with Elements Green to mitigate climate change and enhance local biodiversity.”

Dr Patrick Candler

CEO



TRT will advise and monitor Natural Flood Management interventions, supporting local communities and increasing catchment resilience.”

Emily Richardson

Environmental Project Owner

Have Your Say

We want to hear your feedback on the Great North Road Solar and Biodiversity Park.

We value local knowledge, and we are confident that this consultation will result in a strong set of proposals that respect the concerns of local communities while generating clean, renewable energy. We will acknowledge and record all comments submitted to us during this consultation taking them into consideration to help inform our decisions as we evolve and finalise our proposals. As well as learning more about our proposals and providing your written feedback at today's event, you can also provide your feedback to our Phase Two Consultation in the following ways:

Visit our project website

Our dedicated website (www.gnrsolarpark.co.uk) provides the latest project information, including relevant documents and answers to frequently asked questions (FAQs). You can view and download all consultation materials and complete an online feedback form via our website.

Contact us via our communication lines:

Email: info@gnrsolarpark.co.uk

Call: Freephone 0808 175 4045

Write: FREEPOST GNR SOLAR

The deadline to provide feedback on Great North Road Solar and Biodiversity Park is Thursday 20 February 2024 (on or before this date).

An Introduction to Natural Flood Management – Trent Rivers Trust



Trent Rivers Trust are looking to help identify ways in which we can reduce existing flood risk to communities in the area.

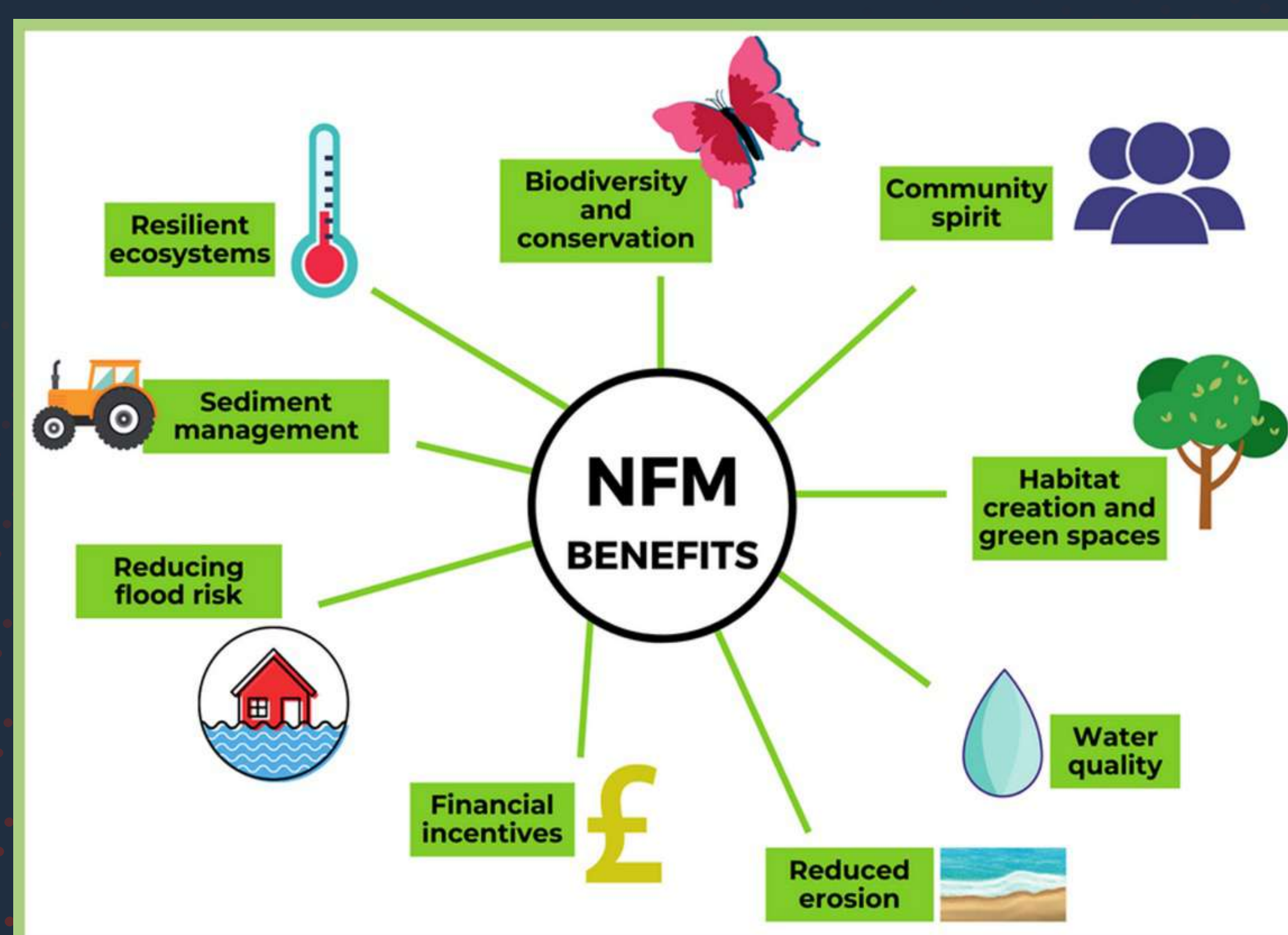
Natural Flood Management (NFM) is a type of 'nature-based solution' that can help to reduce the impact of flood events. Natural Flood Management is one of several different tools needed to manage flood events and build up our resilience to the impact of flooding. But, for this to work, we need to implement changes all across our river catchments. It is all about small changes, little and often.

Some examples of Natural Flood Management that could be applicable across the Great North Road Solar and Biodiversity Park include:

- + Land management changes can help to reduce flood risk by reducing the amount of surface runoff reaching our river and drainage network. We can achieve this with methods that improve soil structure so that water soaks into the ground and the land has a greater capacity to store water.
- + We can diversify how we manage the land to increase surface roughness and provide a barrier to surface flows, slowing water and increasing infiltration. Creating woodlands or vegetation buffer strips will have this impact.
- + A herbal ley can be used to help improve soil structure as it has deep rooting grass species that can improve soil structure and de-compact the soil.
- + We can increase storage in the landscape by creating features that temporarily fill during flood events and slowly release the water. Storage ponds can be connected to streams to provide additional water storage, or they can be placed to intercept and store surface flows during heavy rain events, releasing the water slowly.

Trent Rivers Trust are looking at how measures like these may be used for several local communities such as Maplebeck, Egmanon, Weston, Sutton-on-Trent, and Carlton-on-Trent.

By implementing a range of NFM strategies across our landscape we can help to reduce flood risk and build a more resilient catchment for today and for the future.



4 PHASE TWO COMMUNITY CONSULTATION POSTCARD

Great North Road Solar and Biodiversity Park

Phase Two Community Consultation

Thursday 09 January to Thursday 20 February 2025

Elements Green is launching the second phase of consultation for the Great North Road Solar and Biodiversity Park, a proposed solar and energy storage park located to the northwest of Newark-on-Trent, Nottinghamshire.

We welcome you to take part in our second phase of consultation between **Thursday 09 January and 20 February 2025**.

Attend one of our in-person exhibition events or our community webinar for the opportunity to speak to members of the project team, ask questions and view information about our updated proposals for the Great North Road Solar and Biodiversity Park.

| Date & Time | Location |
|---|--|
| Thursday 23rd January 2pm - 7:30pm | Maplebeck Village Hall Main Street, Maplebeck, Newark, NG22 0BS |
| Friday 24th January 2pm - 7:30pm | Sutton on Trent Sports Club Grassthorpe Rd, Sutton on Trent, Newark, NG23 6QX |
| Saturday 25th January 11am - 3pm | North Muskham Rural Community Centre North Muskham, Newark, NG23 6HL |
| Wednesday 29th January 2pm - 7:30pm | Laxton Village Hall High St, Laxton, Newark, NG22 0NX |
| Thursday 30th January 11am - 3pm | Kelham House Country Manor Main Street, Kelham, Newark, NG23 5QP |
| Friday 31st January 2pm - 7:30pm | Carlton on Trent Village Hall Main Street, Carlton-on-Trent, Newark, NG23 6NW |
| Tuesday 4th February 2pm - 6:30pm | Eakring Cator Hall Kirklington Road, Eakring, Newark, NG22 0DA |
| Wednesday 5th February 11am - 3pm | Newark Town Hall Newark, Nottinghamshire, NG24 1DU |
| Monday 10th February 5:30pm - 7:00pm | Online Community Webinar Zoom |



Have Your Say

We want to hear your feedback on our updated proposals to help inform and influence the final design.

You can submit a feedback form at any of our information events, online by visiting our website, or sending a copy via email or freepost. You can also provide written feedback through our communications channels.

The deadline to submit feedback is **23:59pm Thursday 20 February 2025** (on or before this date).

Get in Touch



Email: info@gnrsolarpark.co.uk



Call: Freephone 0808 175 4054



Visit: www.gnrsolarpark.co.uk

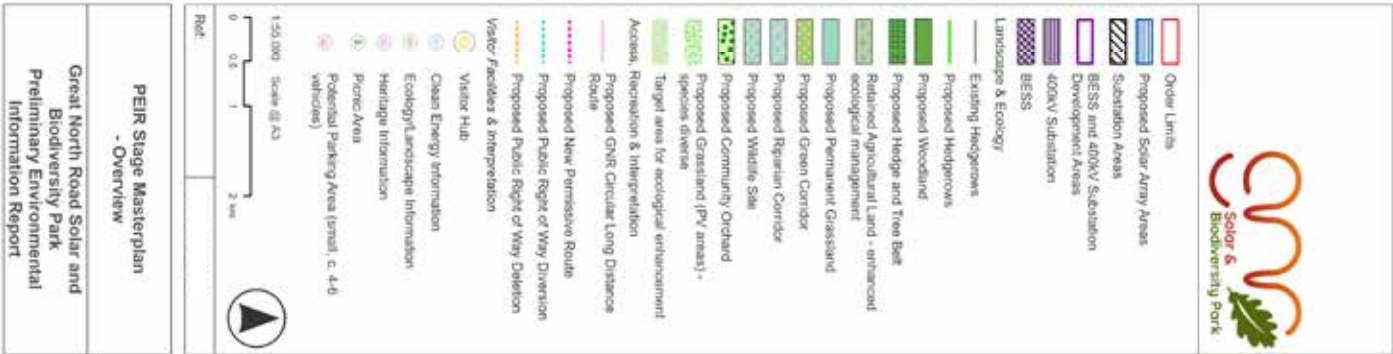
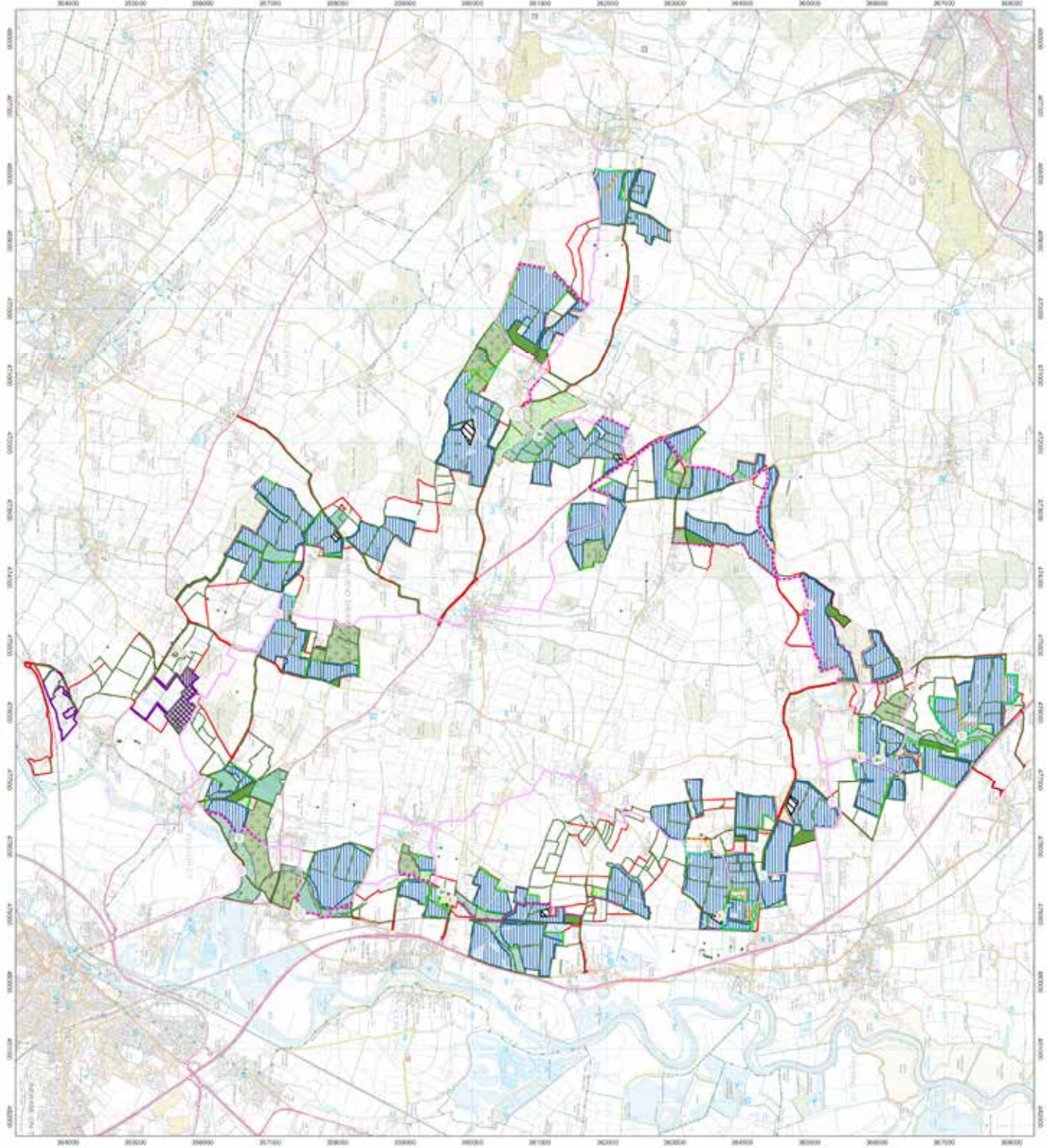


Write: FREEPOST GNR SOLAR
*You do not need a stamp



All project information can be found by scanning the QR code or visiting our website at www.gnrsolarpark.co.uk

This map is for illustrative purposes only. Please visit our website to view and download Project maps.



5 PHASE TWO POSTER

Great North Road Solar and Biodiversity Park



Phase Two Consultation

Thursday 09 January - Thursday 20 February 2025

We would like to welcome you to our drop-in community information events to find out more about our proposals for the Great North Road Solar and Biodiversity Park, a proposed solar and energy storage park located to the northwest of Newark-on-Trent, Nottinghamshire.

Our team will be at the following events for you to speak to and ask questions about our proposals for the Great North Road Solar and Biodiversity Park.

| Location | Date & Time |
|---|--|
| Maplebeck Village Hall Main Street, Maplebeck, Newark, NG22 OBS | Thursday 23rd January 2pm - 7:30pm |
| Sutton on Trent Sports Club Grassthorne Rd, Sutton on Trent, Newark, NG23 6QX | Friday 24th January 2pm - 7:30pm |
| North Muskham Rural Community Centre North Muskham, Newark, NG23 6HL | Saturday 25th January 11am - 3pm |
| Laxton Village Hall High St, Laxton, Newark, NG22 0NX | Wednesday 29th January 2pm - 7:30pm |
| Kelham House Country Manor Main Street, Kelham, Newark, NG23 5QP | Thursday 30th January 11am - 3pm |
| Carlton on Trent Village Hall Main Street, Carlton-on-Trent, Newark, NG23 6NW | Friday 31st January 2pm - 7:30pm |
| Eakring Cator Hall Kirklington Road, Eakring, Newark, NG22 0DA | Tuesday 4th February 2pm - 6:30pm |
| Newark Town Hall Newark, Nottinghamshire, NG24 1DU | Wednesday 5th February 11am - 3pm |
| Online Community Webinar Zoom | Monday 10th February 5:30pm - 7:00pm |

Community Access Points

You can also pick up hard copies of our Phase Two central booklet and feedback form, as well as view our Preliminary Environmental Information Report Non-Technical Summary (PEIR NTS) at one of our Community Access Points (CAPs).

| Location | Opening Times |
|--|---|
| Newark and Sherwood District Council Offices Castle House, Great North Road, Newark, Nottinghamshire, NG24 1BY | Monday to Friday: 9am to 5pm |
| Southwell Library The Bramley Centre, King St, Southwell, NG25 0EH | Monday: 9am to 6pm Tuesday, Wednesday and Friday: 9am to 5pm Thursday: 9am to 1pm Saturday: 9am to 3pm Sunday: 11am to 3pm |
| Newark Library Beaumont Gardens, Balderton Gate, Newark NG24 1UW | Monday, Wednesday: 9am to 6:30pm Tuesday, Thursday, Friday: 9am to 6pm Saturday: 9am to 4pm |
| Ollerton Library Forest Rd, New Ollerton, Newark, NG22 9PL | Monday, Friday: 9am - 1pm, 1:30pm - 5:30pm Tuesday: 9am - 1pm Wednesday: 2pm - 5:30pm Saturday: 9am - 12:30pm |

*Current opening times, subject to change by the venue.

We want to hear your feedback on our proposals to help inform and influence the final design. You can submit a feedback form at any of the information events, online by visiting our website, or by email or freepost at the address below. The deadline to submit feedback is **23:59pm Thursday 20 February 2025** (on or before this date).

Get in Touch



Visit: www.gnrsolarpark.co.uk



Call: Freephone 0808 175 4054



Email: info@gnrsolarpark.co.uk



Write: Freepost GNR Solar
*You do not need a stamp



6 PHASE TWO NEWSPAPER ADVERTS (PLACED IN NEWARK ADVERTISER AND NOTTINGHAM POST)

A shop has opened its doors in the heart of Newark, bringing new offerings, energies, and events to what is hoped to become a community hub.

Shanice Taylor, a former chef, has decided to invest in one of her passions and open The Raven's Hearth witchcraft and spiritual shop at 37 Kirkgate.

The shop, which sells a range of products, from spiritual to witchcraft, also sells art and crafts from artists across the region.

She is also planning events such as crystal workshops, spiritual healing, reiki, sound baths, painting nights, craft days for children, and wand-making sessions.

Shanice, originally from

Business charming shoppers with its positive energies

By Marta Tavares

@iliffepublishing.co.uk

Leicester, moved to Newark over three years ago to leave hospitality behind, however, she ended up slipping back into the routine of being a chef until she met her now husband.

She said: "I have always been into shiny rocks and nature and trees as I like how

calming it is and how connected people feel when they are in natural spaces.

"I have been a chef all my life, but decided to leave hospitality," she said.

"I was racking my brain trying to figure out what I wanted to do every day, where I would be happy every day, and I came to the conclusion that this would be great — to sit in a room that looks pretty and smells lovely and try and build a community hub.

"As soon as I saw the shop, I knew I wanted it."

Having eyed the shop around a year ago, it wasn't until December that she had access to the keys officially.

Shanice added: "I'm used to quite high pressure, long hours, long days and being exhausted, whereas I come here every day, I can sit down, turn the lights on, and it's very relaxing and chill."

"Such lovely people come here every day so it is defin-



Shanice Taylor, owner of The Raven's Hearth.

itely a gear change from what I was used to."

The shop aims to offer something new every day, from the incense of the day to the layout of the space and decoration and the experience of visiting the shop.

Shanice also promises the

shop will be a place for the community.

"If I have people come in who are sad and just want to chat, I am more than happy to sit there and be that person for them," said Shanice.

Despite several businesses

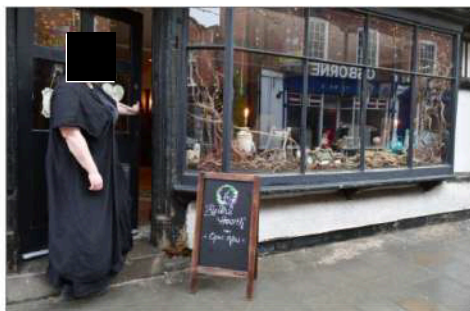
closing their doors, Shanice says she is not afraid of the pressure of the business and that the secret is being flexible.

She said: "It's about the people and what they think, about figuring out what they want and need."

"Flexibility is the main thing when it comes to small businesses and to not get enamoured about your own idea so much that you're not willing to listen to the people who are supposed to be coming."

"I'll say that in about six months' time, if the shop wasn't doing well and if the workshops aren't setting off the kind of way that I thought they would, then I could just change the angle a little bit."

On February 4, there will be the first 'sistership' circle, a women's group that will be running twice a month which consists of community-based women's healing and support.



The Raven's Hearth has opened on Kirkgate, Newark.

Great North Road Solar and Biodiversity Park



Phase Two Consultation

Thursday 09 January - Thursday 20 February 2025

We would like to welcome you to our drop-in community information events to find out more about our proposals for the Great North Road Solar and Biodiversity Park, a proposed solar and energy storage park located to the northwest of Newark-on-Trent, Nottinghamshire.

Our team will be at the following events for you to speak to and ask questions about our proposals for the Great North Road Solar and Biodiversity Park.

| Location | Date & Time |
|---|--|
| Kelham House Country Manor Main Street, Kelham, Newark, NG23 5QP | Thursday 30th January 11am - 3pm |
| Carlton on Trent Village Hall Main Street, Carlton-on-Trent, Newark, NG23 6NW | Friday 31st January 2pm - 7:30pm |
| Eakring Cator Hall Kirklington Road, Eakring, Newark, NG22 0DA | Tuesday 4th February 2pm - 6:30pm |
| Newark Town Hall Newark, Nottinghamshire, NG24 1DU | Wednesday 5th February 11am - 6pm |
| Online Community Webinar Zoom | Monday 10th February 5:30pm - 7:00pm |

Please note that, due to venue availability, we have extended the timing for our information event in Newark Town Hall. The updated closing time is provided above.

Community Access Points

You can also pick up hard copies of our Phase Two central booklet and feedback form, as well as view our Preliminary Environmental Information Report Non-Technical Summary (PEIR NTS) at one of our Community Access Points (CAPs).

| Location | Opening Times |
|--|---|
| Newark and Sherwood District Council Offices Castle House, Great North Road, Newark, Nottinghamshire, NG24 1BY | Monday to Friday: 9am to 5pm |
| Southwell Library The Bramley Centre, King St, Southwell, NG25 0EH | Monday: 9am to 6pm Tuesday, Wednesday and Friday: 9am to 5pm Thursday: 9am to 1pm Saturday: 9am to 3pm Sunday: 11am to 3pm |
| Newark Library Beaumont Gardens, Balderton Gate, Newark NG24 1UW | Monday, Wednesday: 9am to 6:30pm Tuesday, Thursday, Friday: 9am to 6pm Saturday: 9am to 4pm |
| Ollerton Library Forest Rd, New Ollerton, Newark, NG22 9PL | Monday, Friday: 9am - 1pm, 1:30pm - 5:30pm Tuesday: 9am - 1pm Wednesday: 2pm - 5:30pm Saturday: 9am - 12:30pm |

*Current opening times, subject to change by the venue.

We want to hear your feedback on our proposals to help inform and influence the final design. You can submit a feedback form at any of the information events, online by visiting our website, or by email or freepost at the address below. The deadline to submit feedback is **23:59pm Thursday 20 February 2025** (on or before this date).

Get in Touch



Visit: www.gnrsolarpark.co.uk



Email: info@gnrsolarpark.co.uk



Call: Freephone 0808 175 4054



Write: Freepost GNR Solar
*You do not need a stamp



Your Home



Art attack: Romantic Prints Gallery Wall, £447 for nine framed prints, Poster Store

Bedroom reboot

The presenter and designer Whinnie Williams has some fabulous ways to refresh your sleeping space and encourage your creativity. By **SAM WYLIE-HARRIS**

ONE of the biggest home comforts is your bedroom, and with snuggle season in full swing, a boutique-style space brings a sense of luxe to weekend lie-ins and early nights.

So, if you're recharging your batteries post-holiday period, there's no better time to declutter, reorganise and up your decor game to create a calm and cohesive environment for the year ahead.

And creating a stylish sanctuary doesn't have to be expensive... a little creativity, thoughtful finishing touches and comforting accessories set the tone for a fresh start, suggests Whinnie Williams, co-founder of retro-inspired interiors brand Poodle & Blonde and Dreams' interiors expert.

Here, the former singer who has appeared alongside Laurence Llewelyn-Bowen on Channel 4's Changing Rooms and presented on the BBC Three series Hire Me, shares her top budget-friendly tips to nurture your nest...

Start with a declutter

"Decluttering costs nothing and can make your bedroom feel brand new with just



Whinnie Williams, Dreams' interiors expert



a bit of time and effort," says Whinnie. "After the whirlwind of festive events, it's easy for mess to build up unnoticed – think of all those outfits from Christmas parties and gatherings that didn't make it back into the wardrobe.

"Storage plays a key role in achieving a calm, decluttered atmosphere which is why I'm obsessed with my ottoman bed frame. It offers a generous amount

Great North Road Solar and Biodiversity Park



Phase Two Consultation

Thursday 09 January - Thursday 20 February 2025

We would like to welcome you to our drop-in community information events to find out more about our proposals for the Great North Road Solar and Biodiversity Park, a proposed solar and energy storage park located to the northwest of Newark-on-Trent, Nottinghamshire.

Our team will be at the following events for you to speak to and ask questions about our proposals for the Great North Road Solar and Biodiversity Park.

| Location | Date & Time |
|---|--|
| Kelham House Country Manor Main Street, Kelham, Newark, NG23 5QP | Thursday 30th January 11am - 3pm |
| Carlton on Trent Village Hall Main Street, Carlton-on-Trent, Newark, NG23 6NW | Friday 31st January 2pm - 7:30pm |
| Eakring Cator Hall Kirklington Road, Eakring, Newark, NG22 0DA | Tuesday 4th February 2pm - 6:30pm |
| Newark Town Hall Newark, Nottinghamshire, NG24 1DU | Wednesday 5th February 11am - 6pm |
| Online Community Webinar Zoom | Monday 10th February 5:30pm - 7:00pm |

Please note that, due to venue availability, we have extended the timing for our information event in Newark Town Hall. The updated closing time is provided above.

Community Access Points

You can also pick up hard copies of our Phase Two central booklet and feedback form, as well as view our Preliminary Environmental Information Report Non-Technical Summary (PEIR NTS) at one of our Community Access Points (CAPs).

| Location | Opening Times |
|--|---|
| Newark and Sherwood District Council Offices Castle House, Great North Road, Newark, Nottinghamshire, NG24 1BY | Monday to Friday: 9am to 5pm |
| Southwell Library The Bramley Centre, King St, Southwell, NG25 0EH | Monday: 9am to 6pm Tuesday, Wednesday and Friday: 9am to 5pm Thursday: 9am to 1pm Saturday: 9am to 3pm Sunday: 11am to 3pm |
| Newark Library Beaumont Gardens, Balderton Gate, Newark NG24 1UW | Monday, Wednesday: 9am to 6:30pm Tuesday, Thursday, Friday: 9am to 6pm Saturday: 9am to 4pm |
| Ollerton Library Forest Rd, New Ollerton, Newark, NG22 9PL | Monday, Friday: 9am - 1pm, 1:30pm - 5:30pm Tuesday: 9am - 1pm Wednesday: 2pm - 5:30pm Saturday: 9am - 12:30pm |

*Current opening times, subject to change by the venue.

We want to hear your feedback on our proposals to help inform and influence the final design. You can submit a feedback form at any of the information events, online by visiting our website, or by email or freepost at the address below. The deadline to submit feedback is **23:59pm Thursday 20 February 2025** (on or before this date).

Get in Touch



7 PHASE TWO SITE LOCATION PLAN